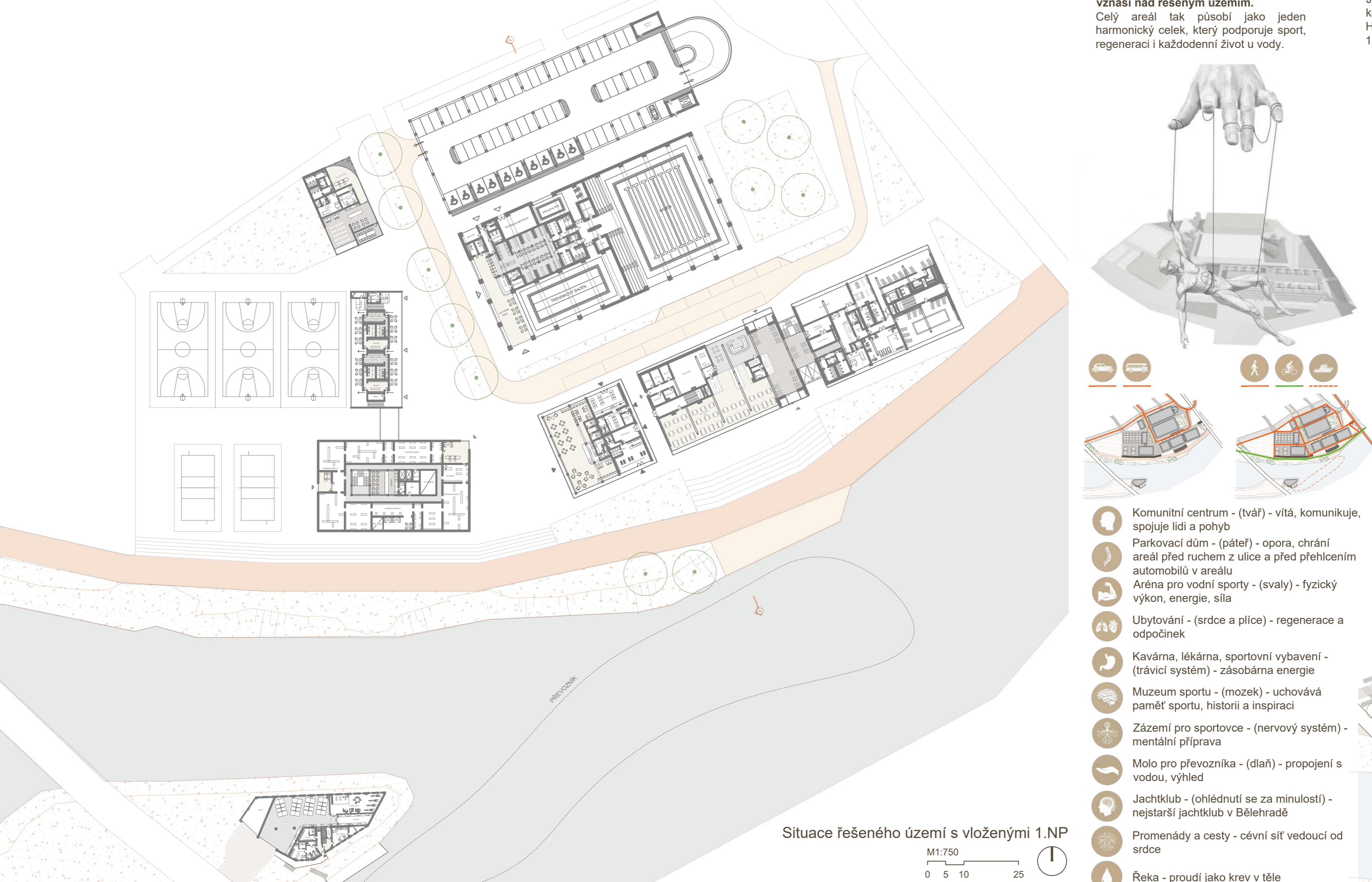
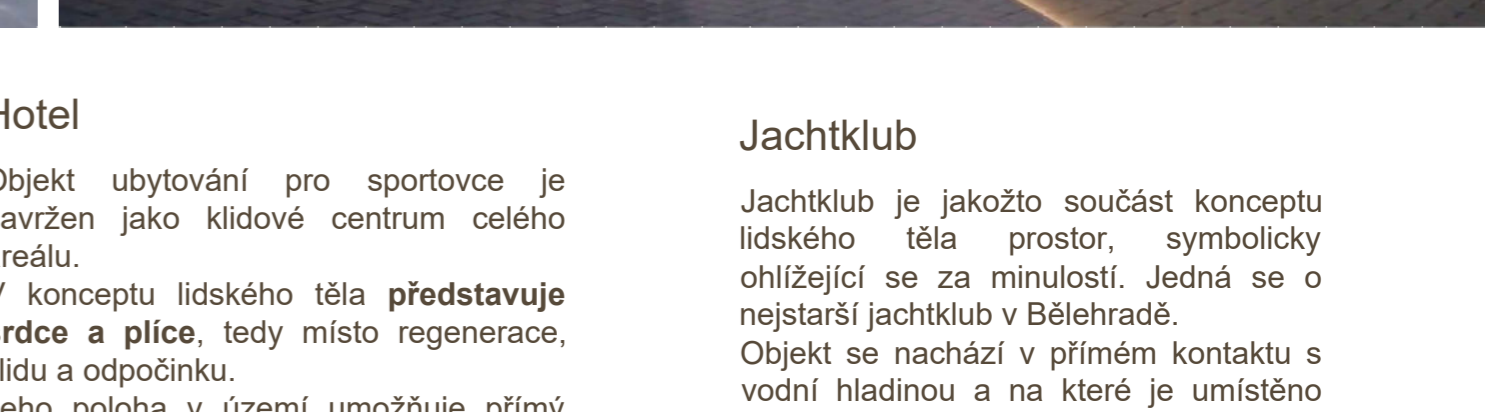
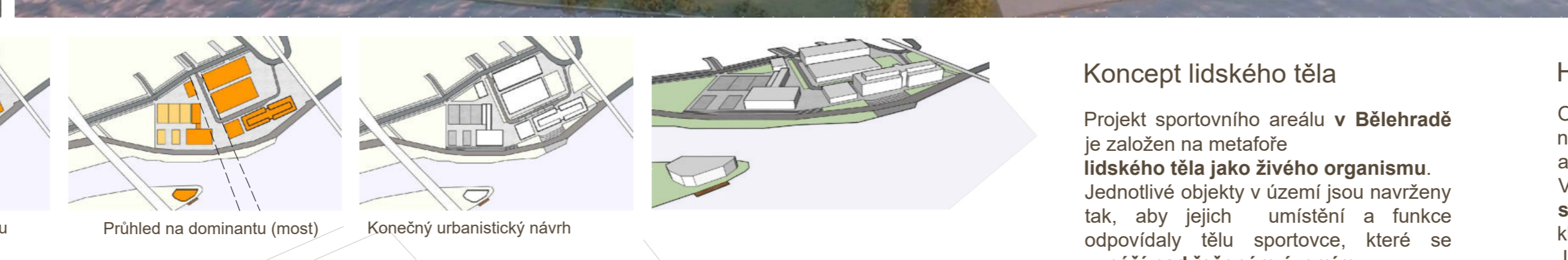
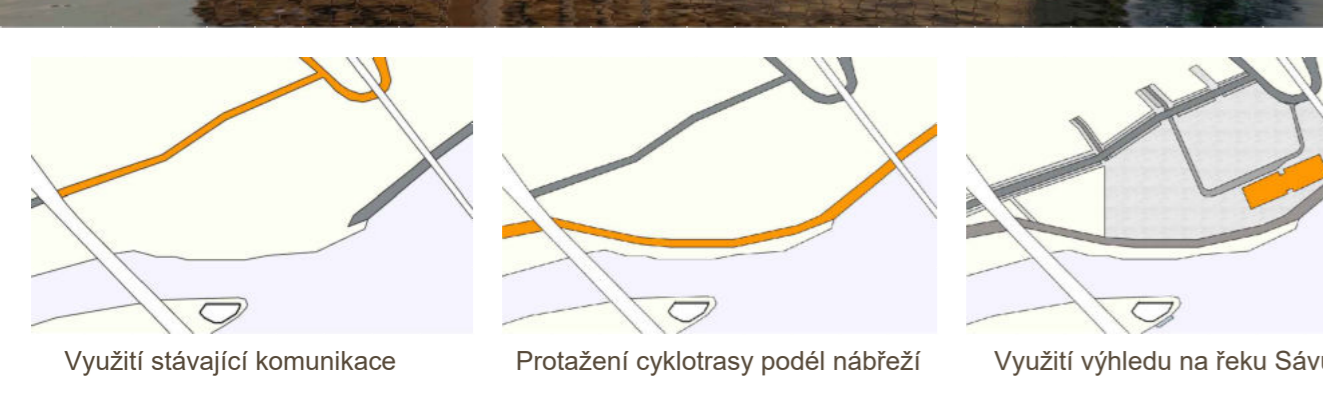
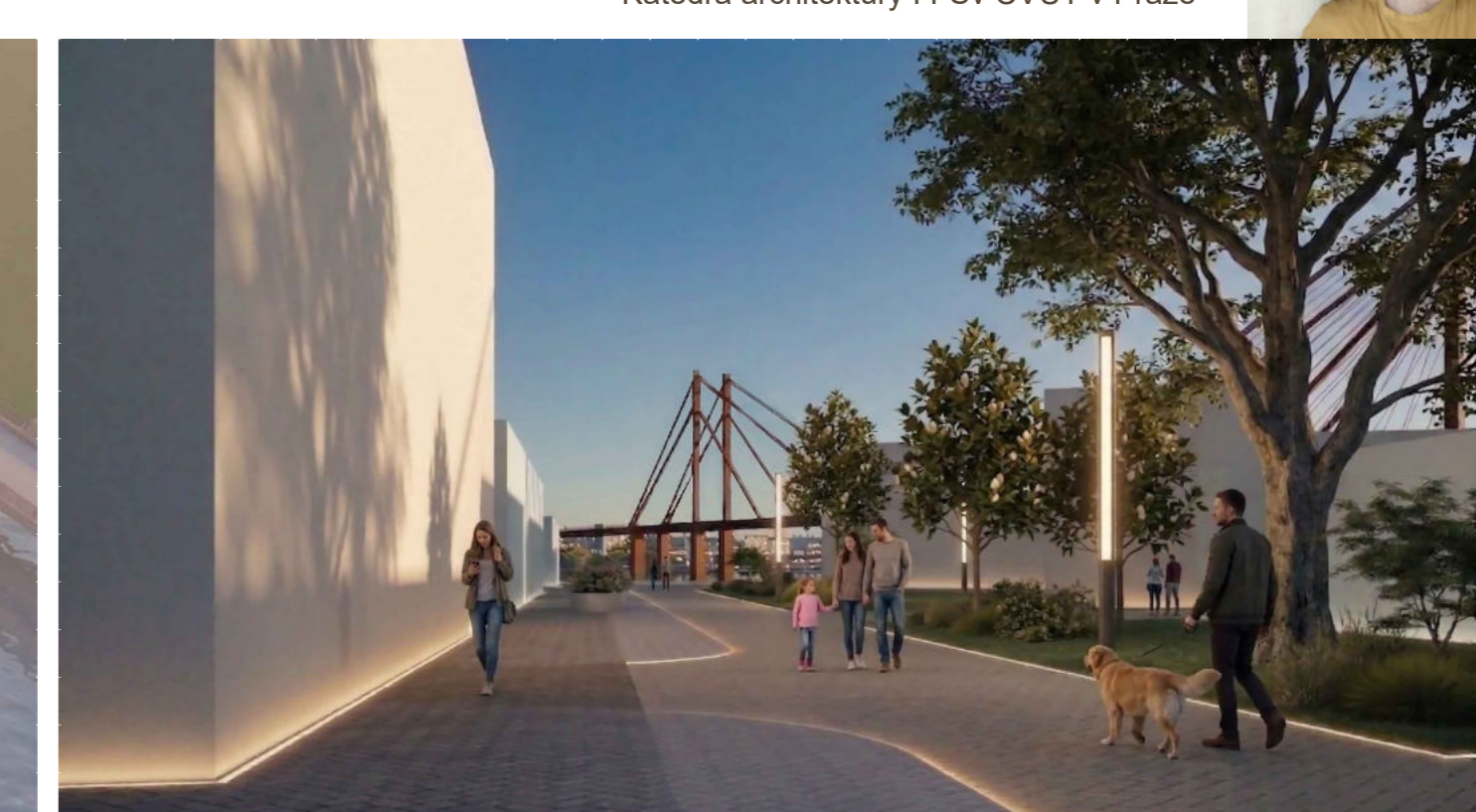
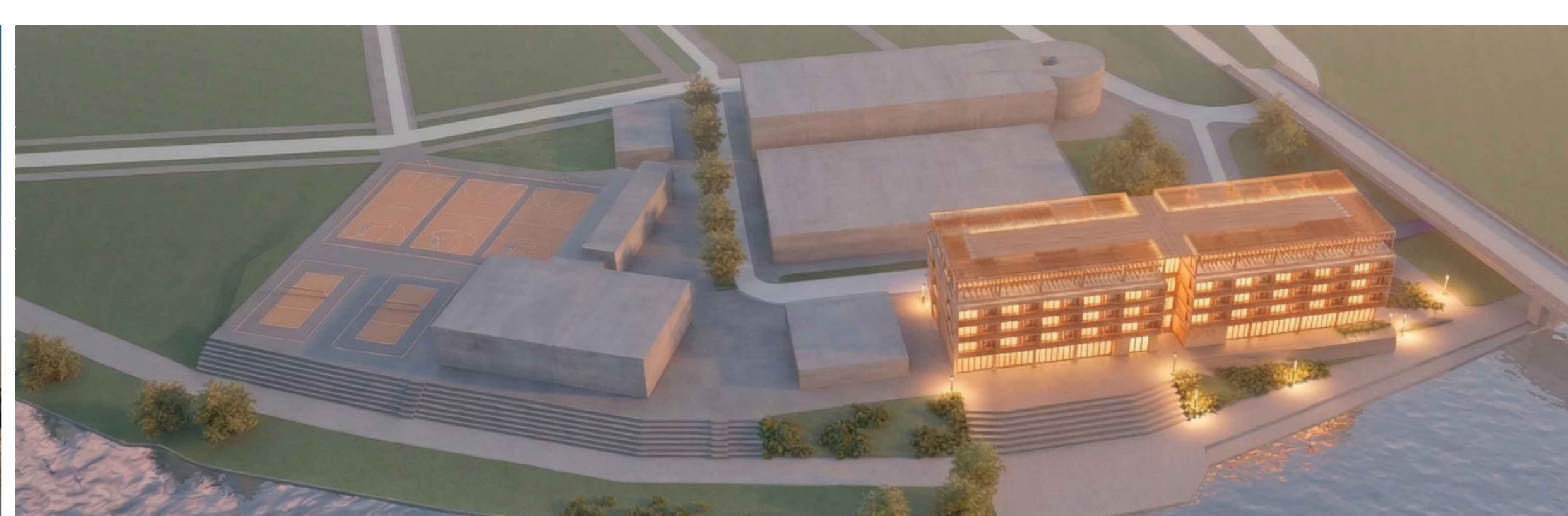
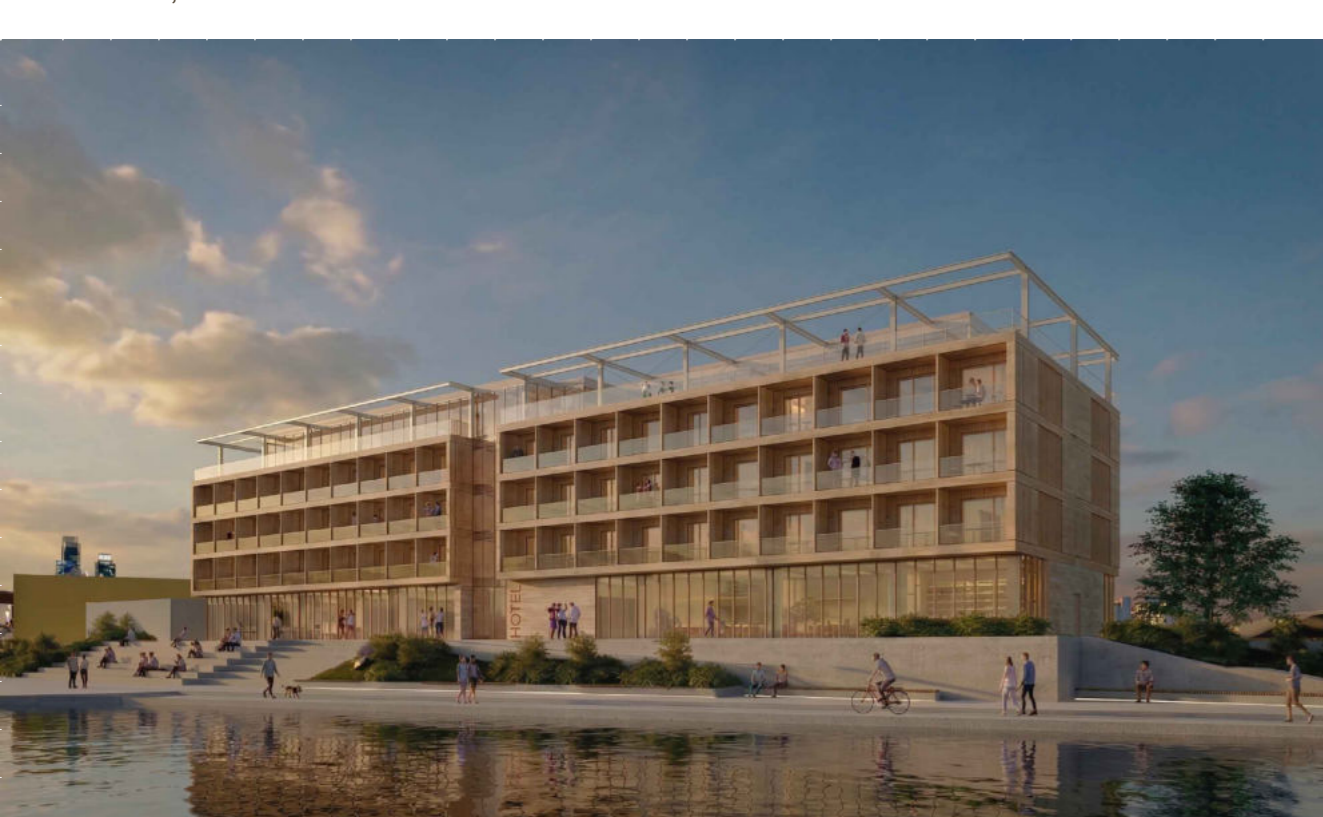




**Ubytování pro sportovce a jachtklub u řeky Sávy**  
Mezinárodní studentská soutěž Saint-Gobain 2026  
Bělehrad, Srbsko

**Bc. Barbora Soukupová, Bc. Matěj Pavlů**  
Vedoucí práce: Ing. arch. Martin Stark Ph.D., Ing. Jiří Novák Ph.D.  
Katedra architektury I FSV ČVUT v Praze



**Koncept lidského těla**

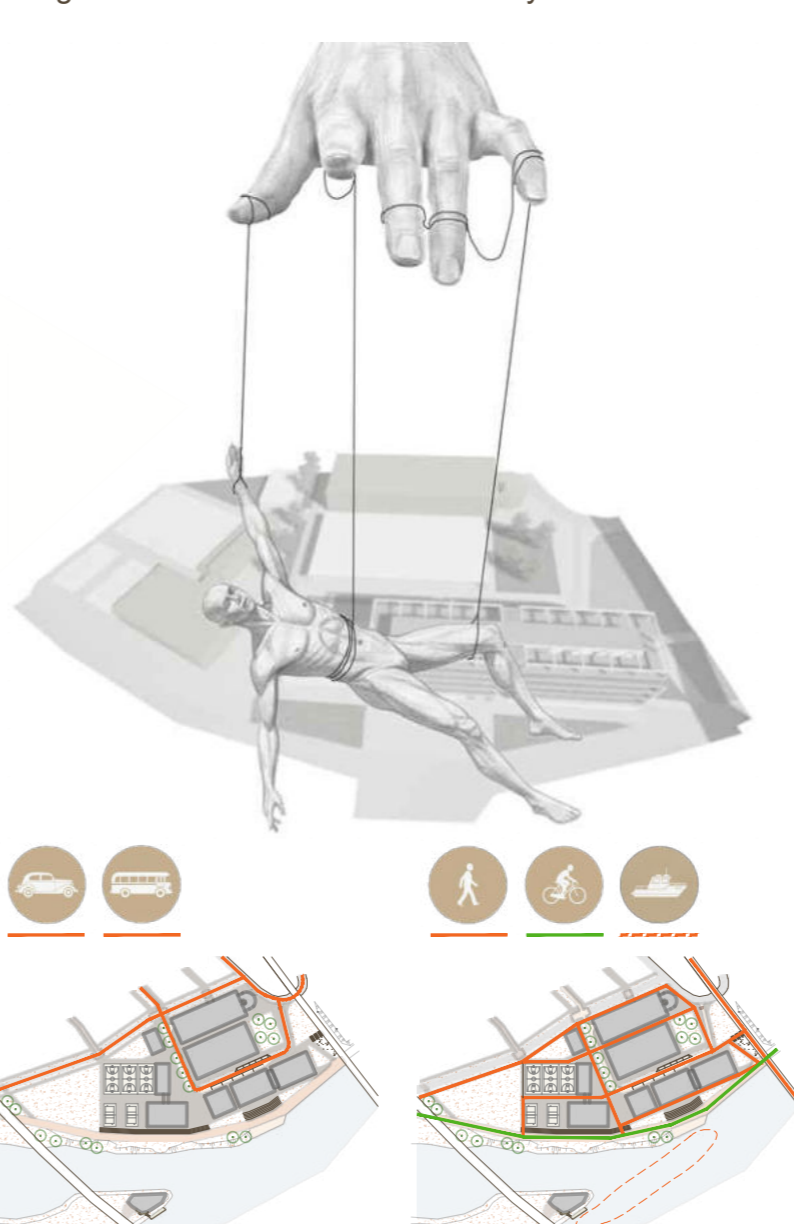
Projekt sportovního areálu v Bělehradě je založen na metaforě **lidského těla jako živého organismu**. Jednotlivé objekty v území jsou navrženy tak, aby jejich umístění a funkce odpovídaly tělu sportovce, které se **vznáší nad řešeným územím**. Celý areál tak působí jako jeden harmonický celek, který podporuje sport, regeneraci a každodenní život v vody.

**Hotel**

Objekt ubytování pro sportovce je navrženo jako klidové centrum celého areálu. V konceptu lidského těla představuje **srdce a plíce**, tedy místo regenerace, klidu a odpočinku. Jeho poloha v území umožňuje přímý kontakt se zelení i výhledy k řece. Hotel má celkovou ubytovací kapacitu 186 hostů.

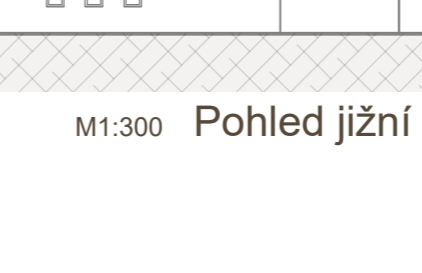
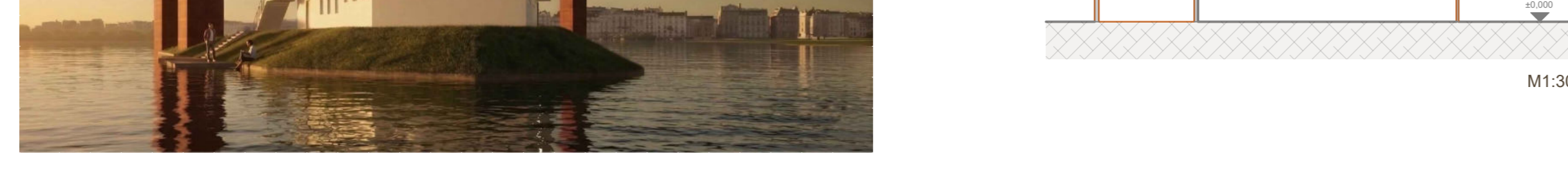
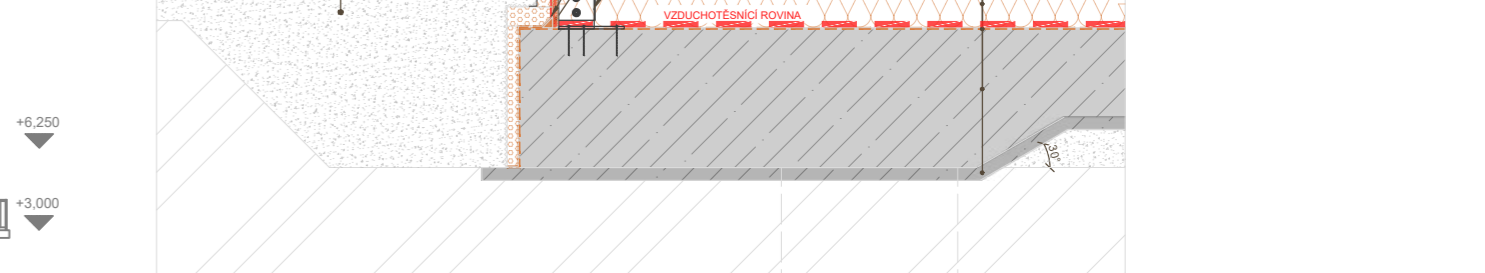
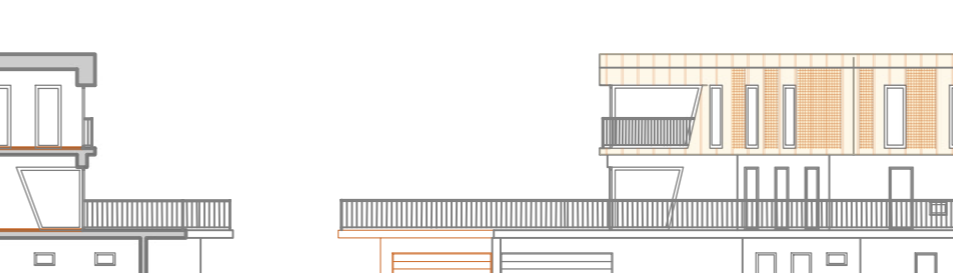
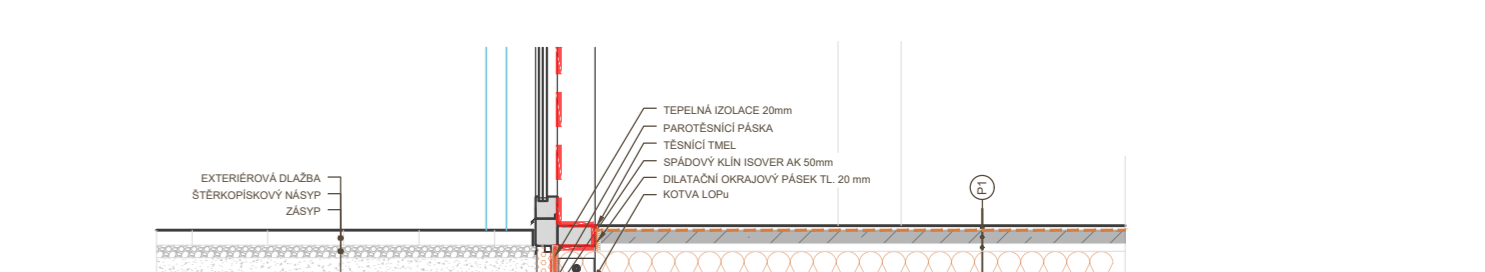
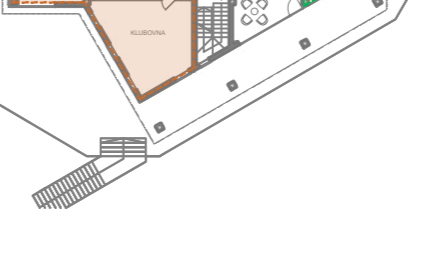
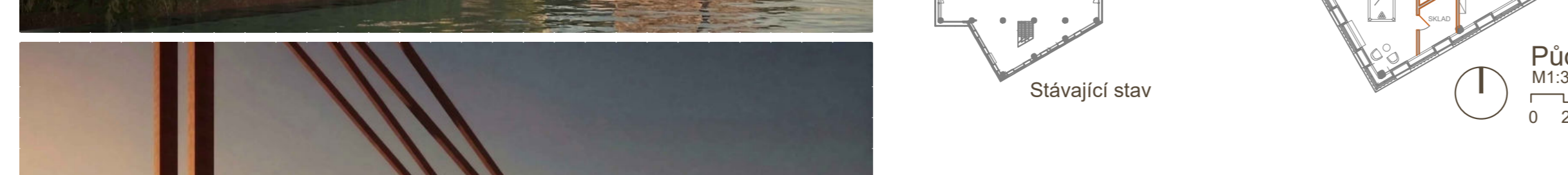
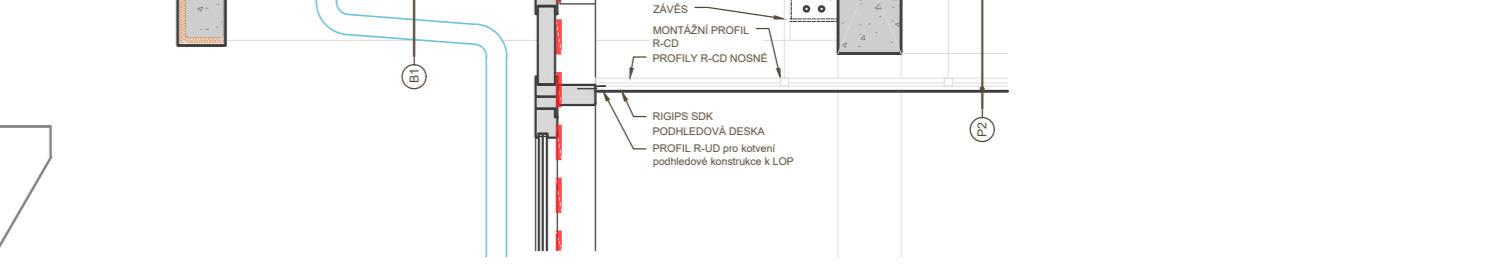
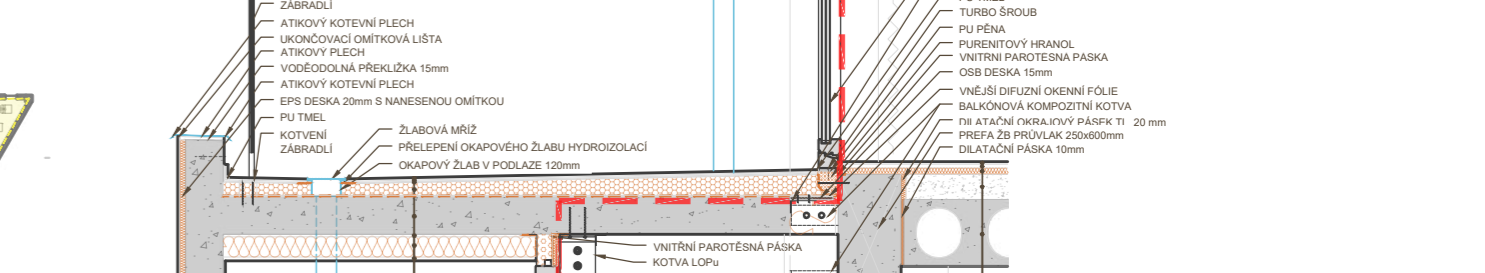
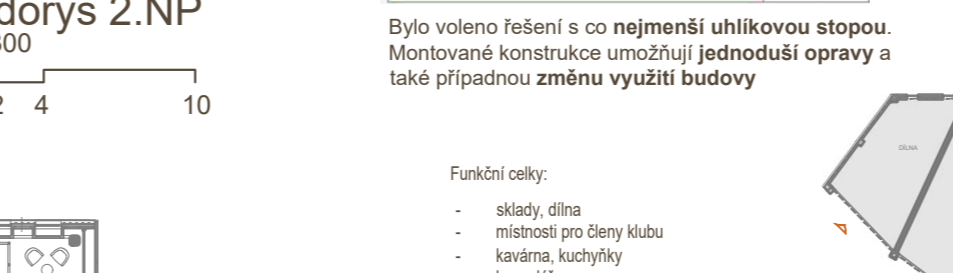
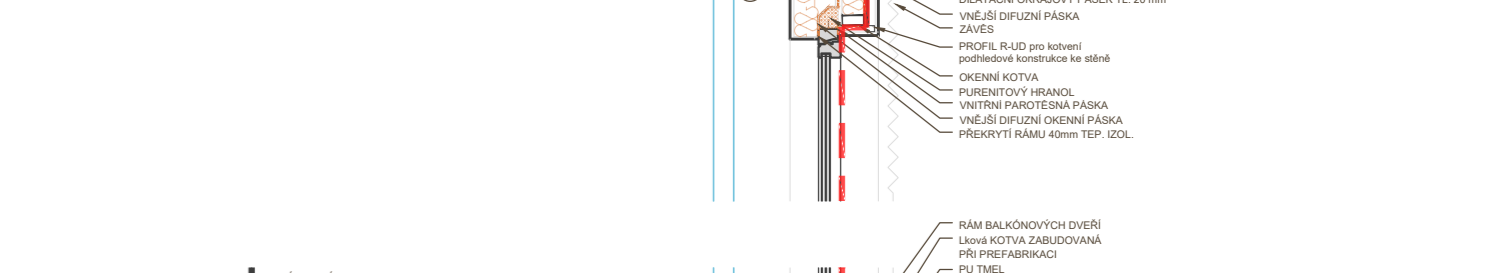
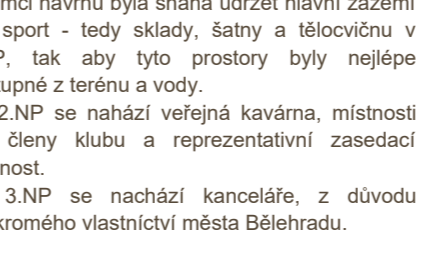
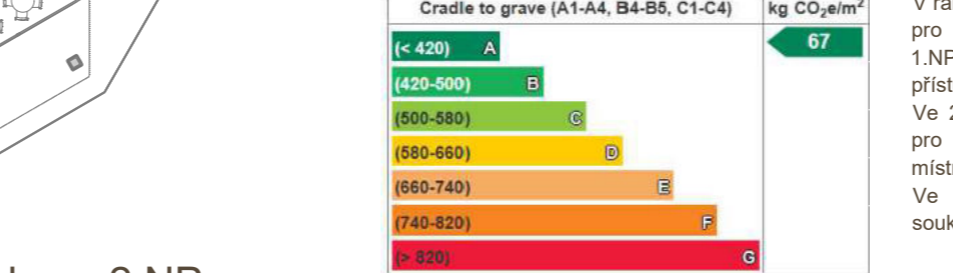
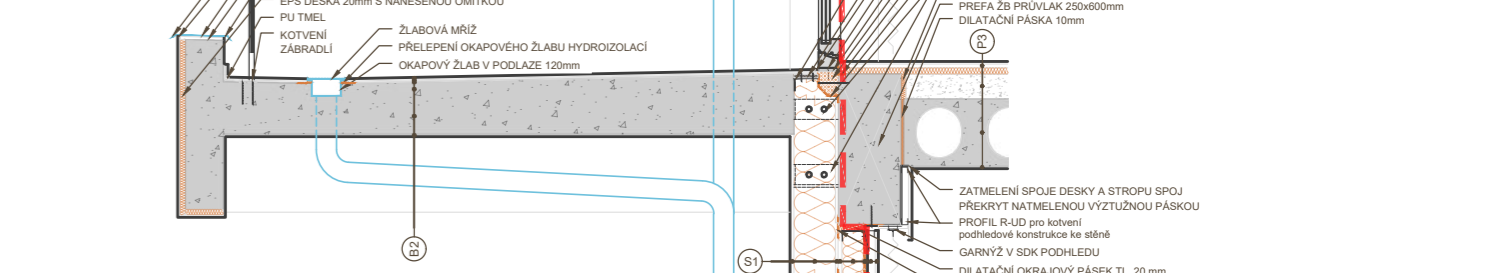
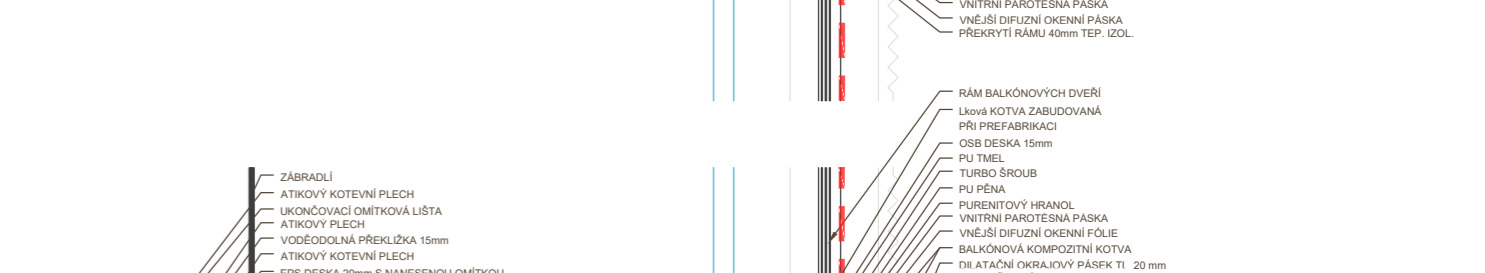
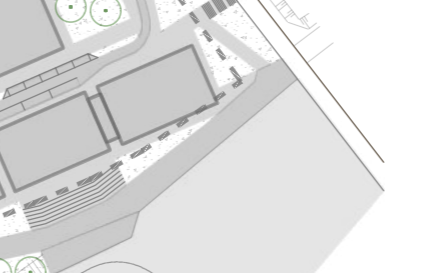
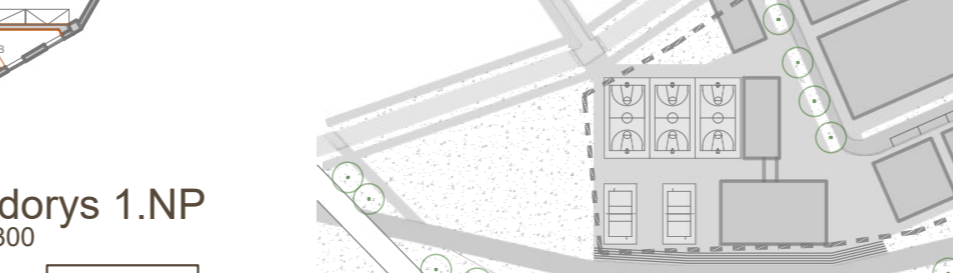
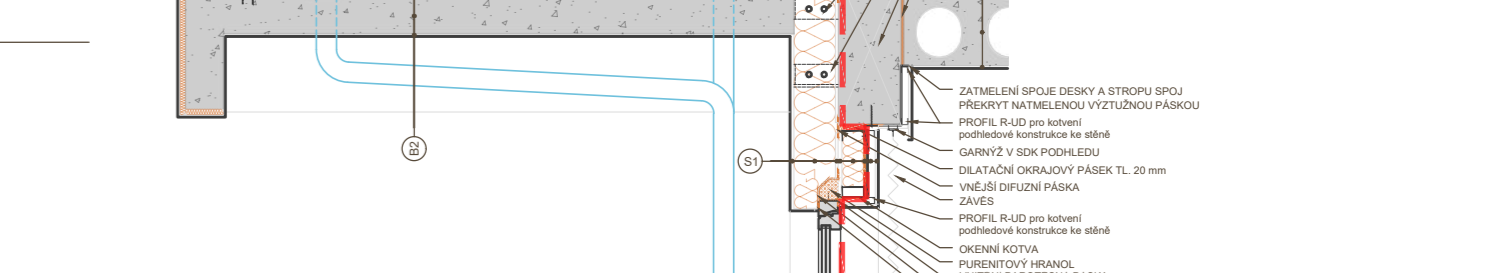
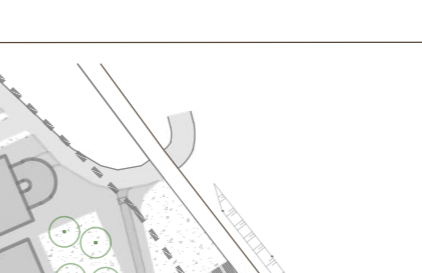
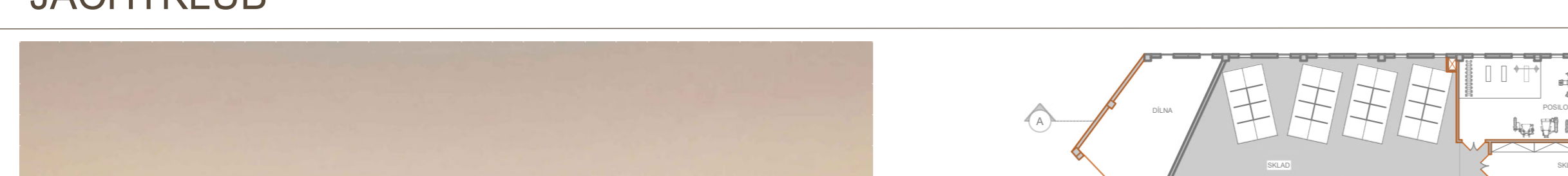
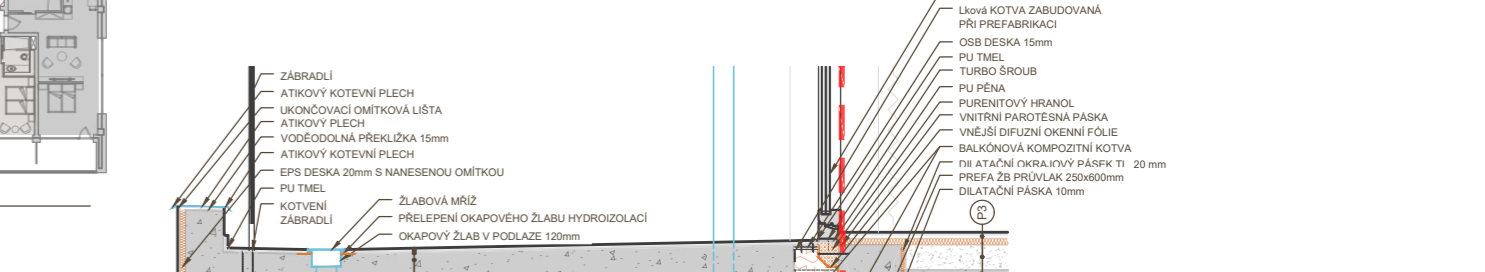
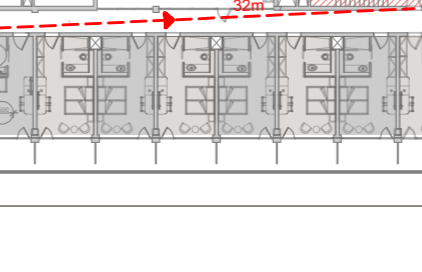
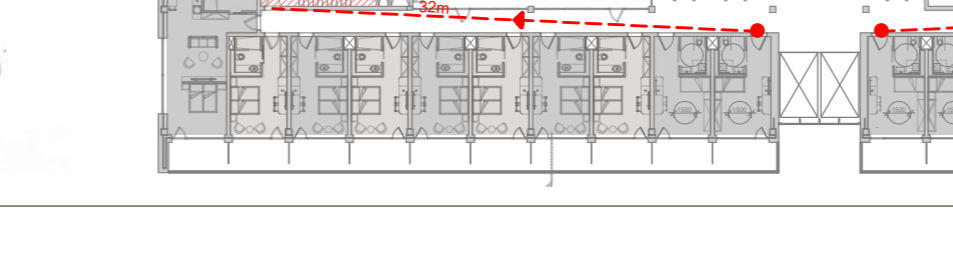
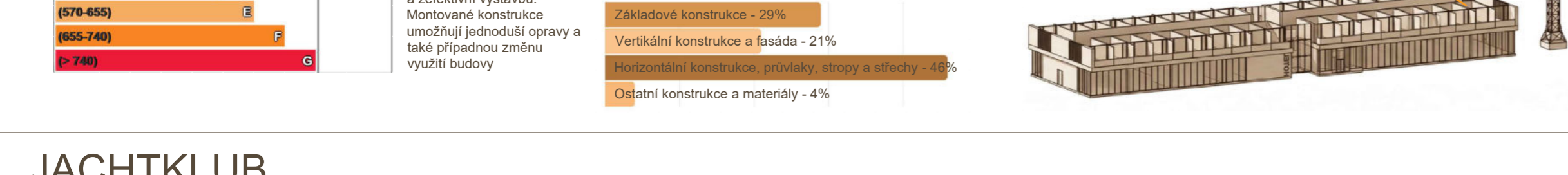
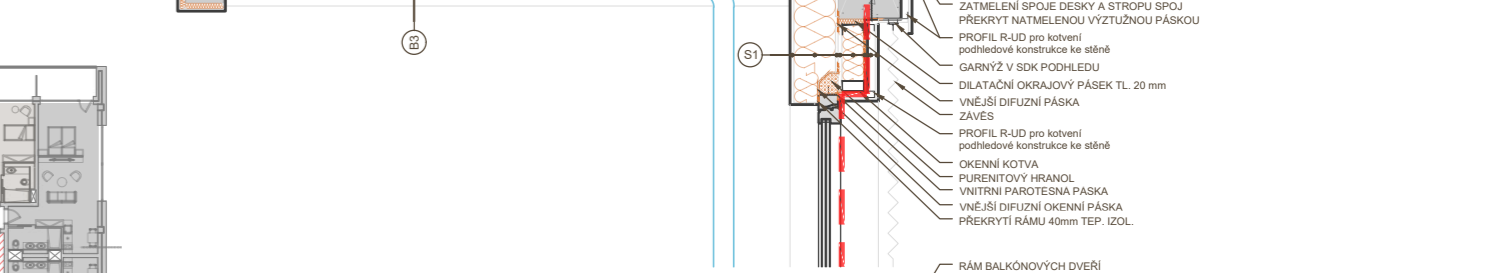
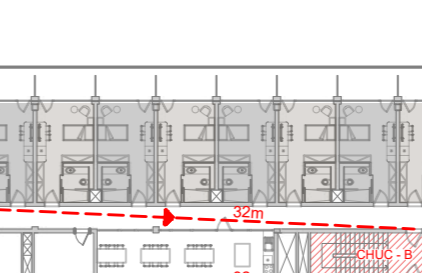
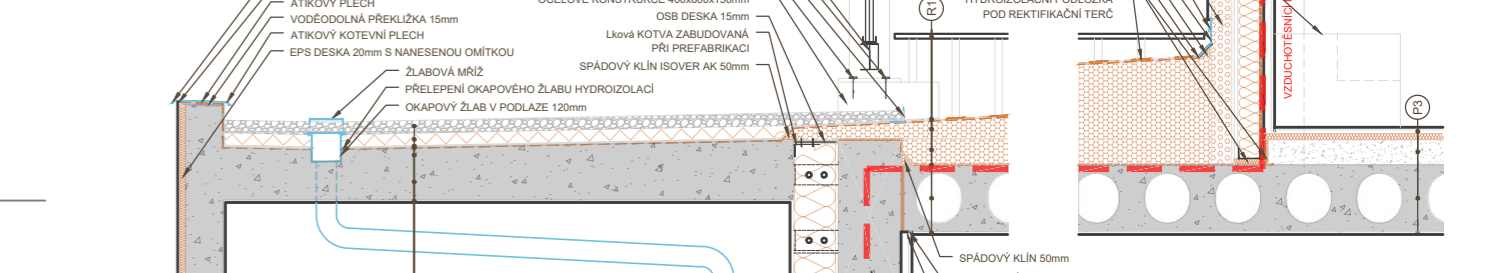
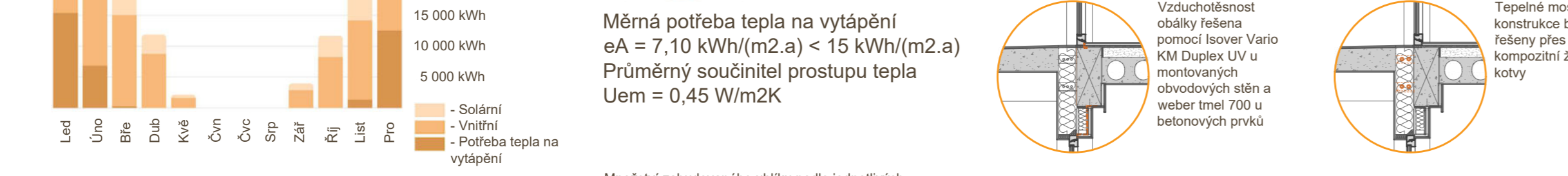
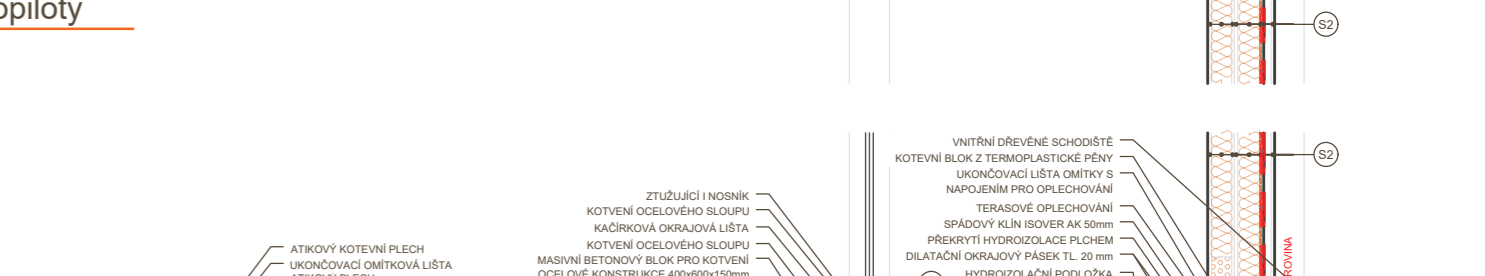
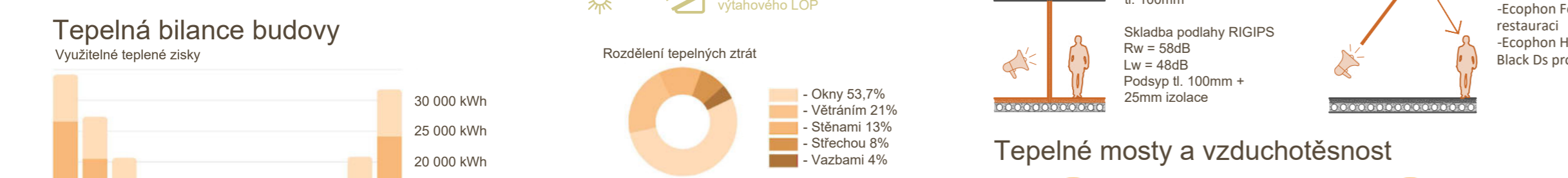
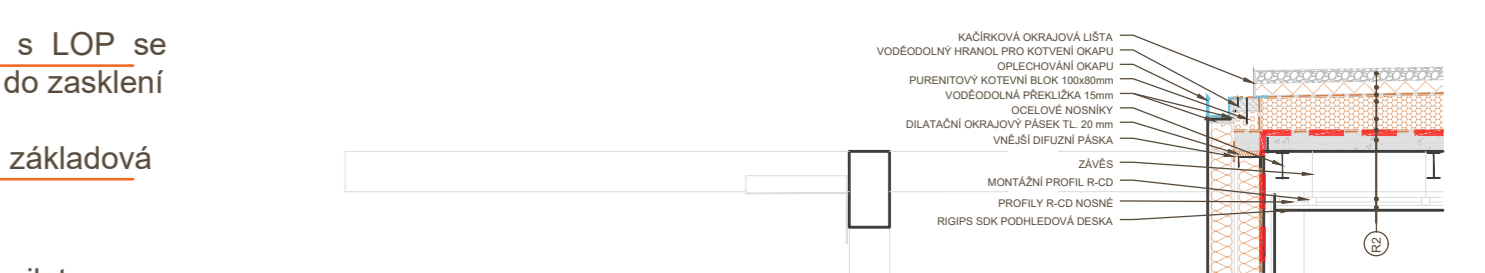
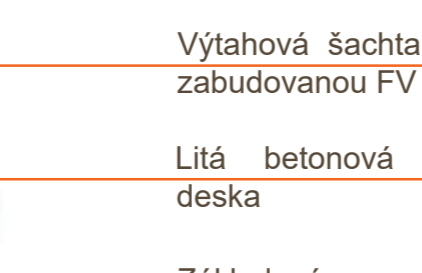
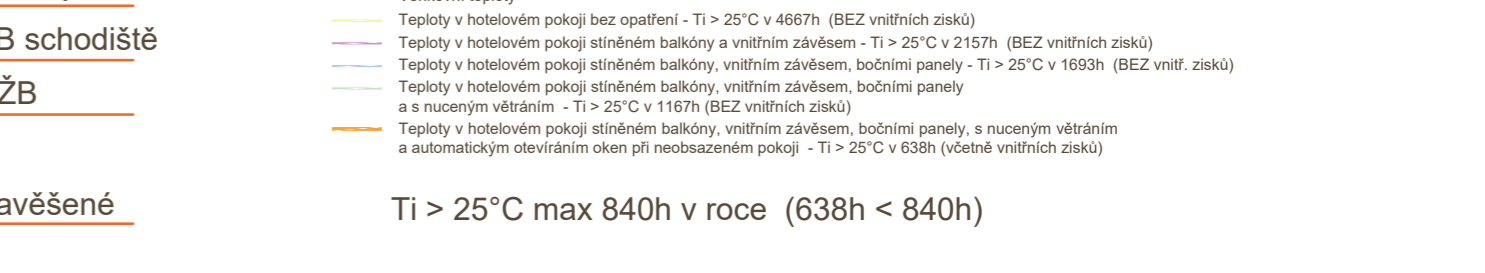
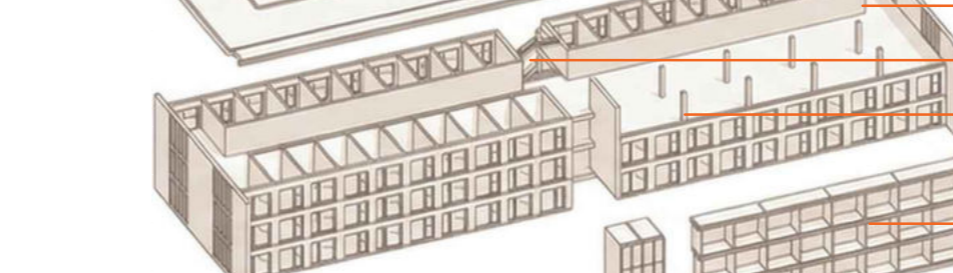
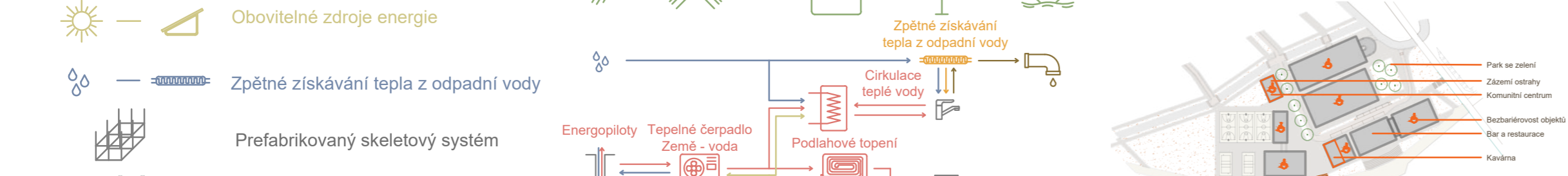
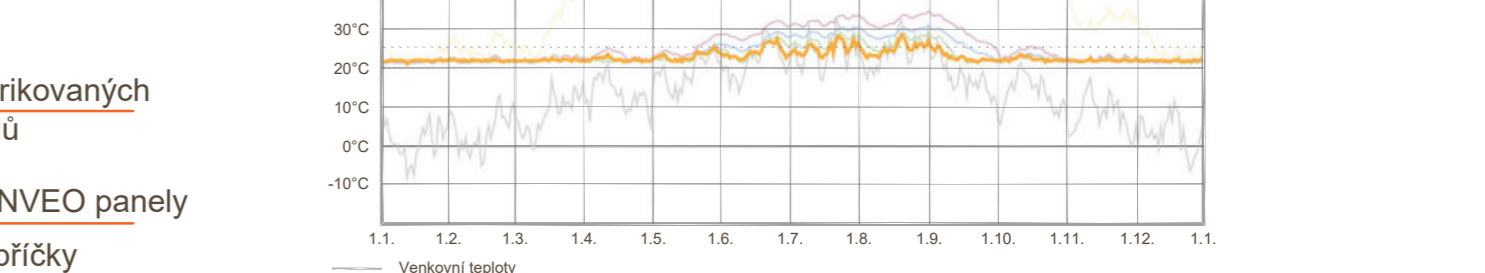
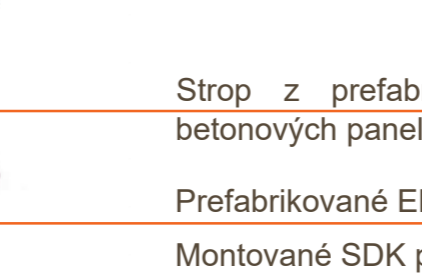
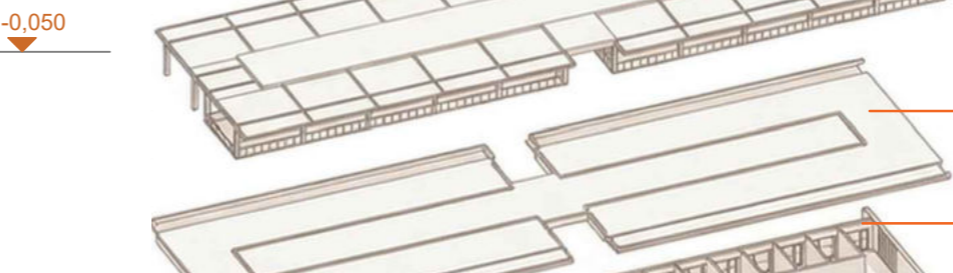
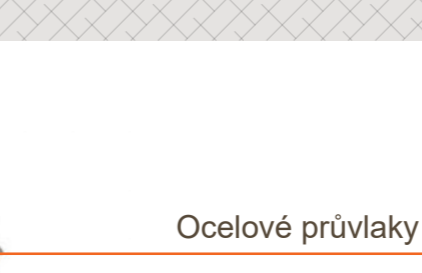
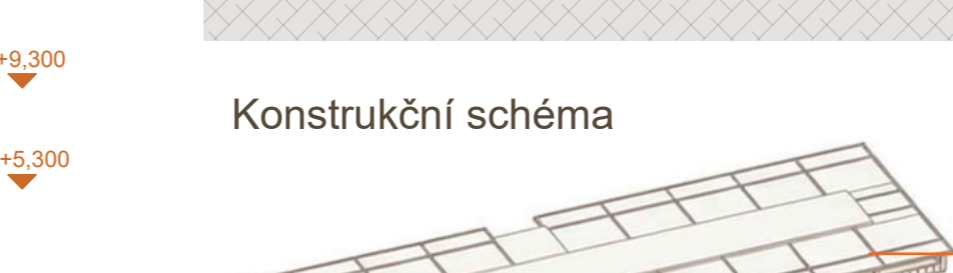
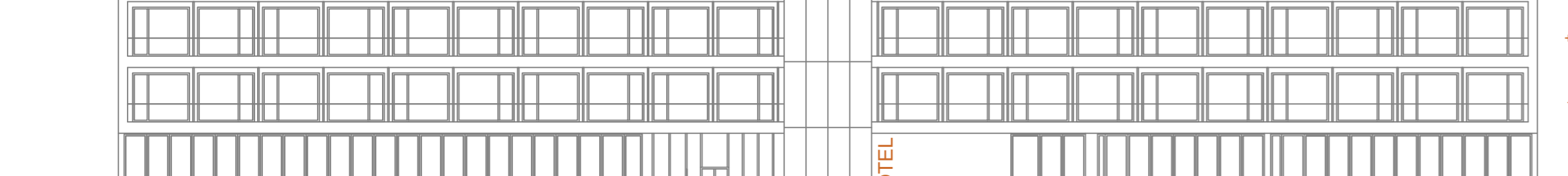
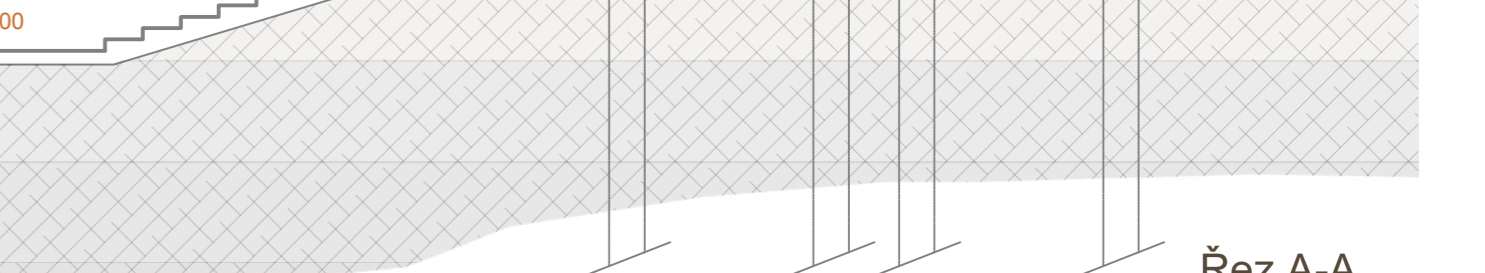
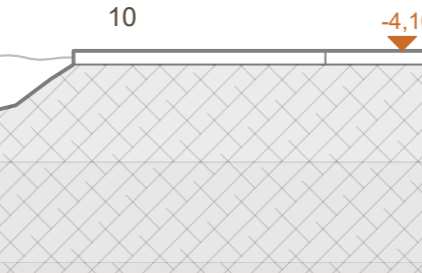
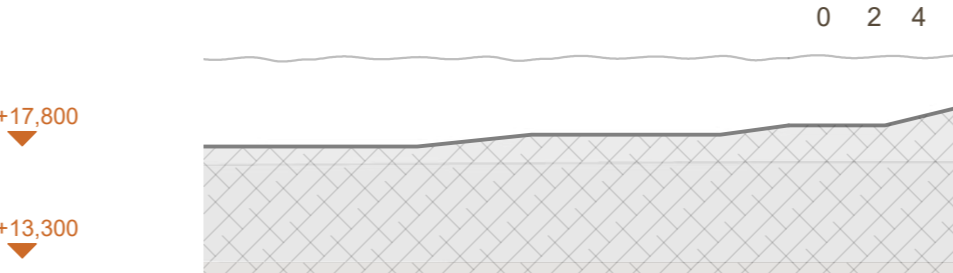
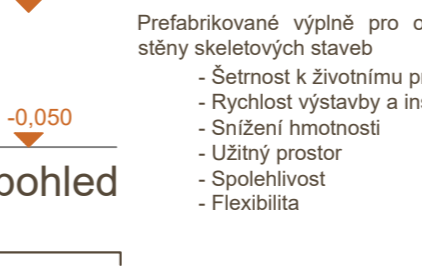
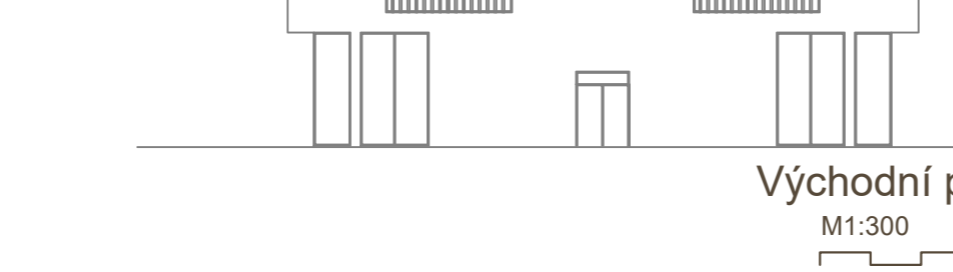
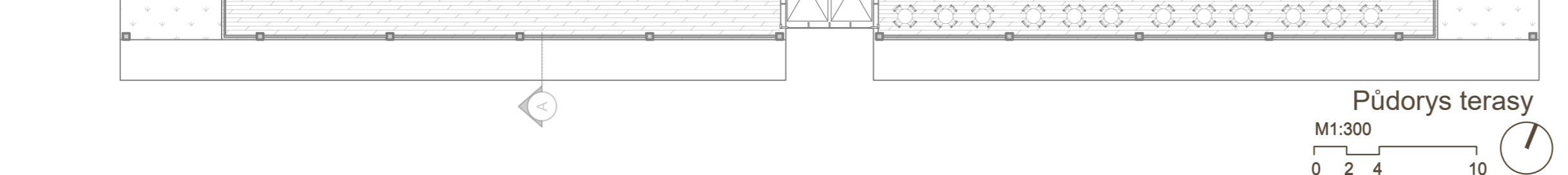
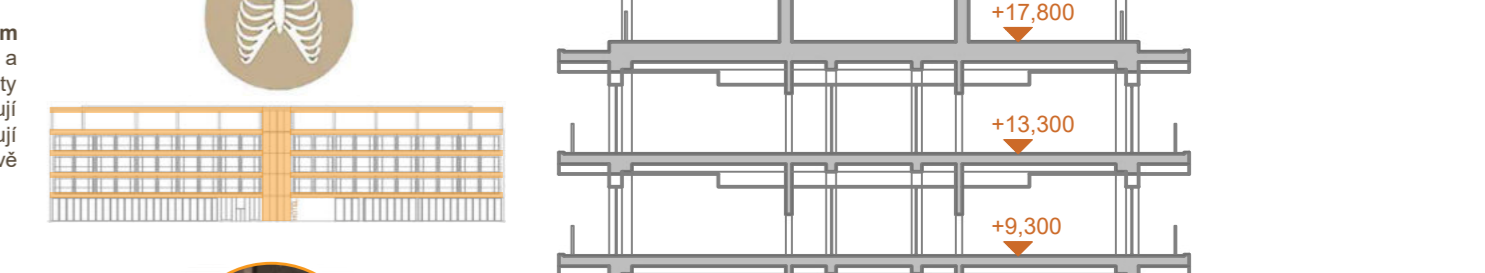
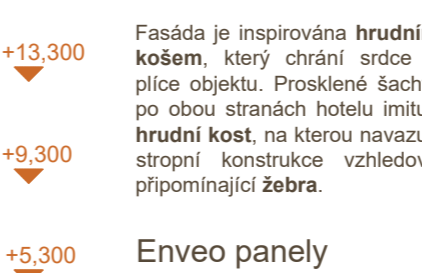
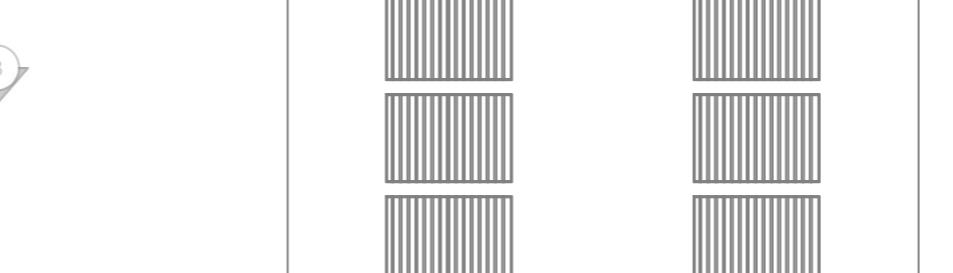
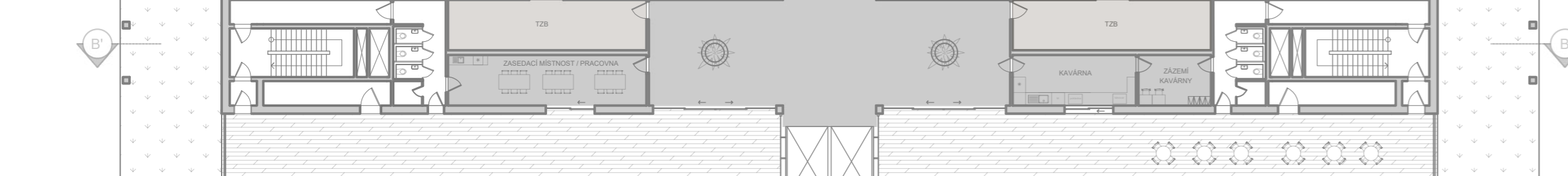
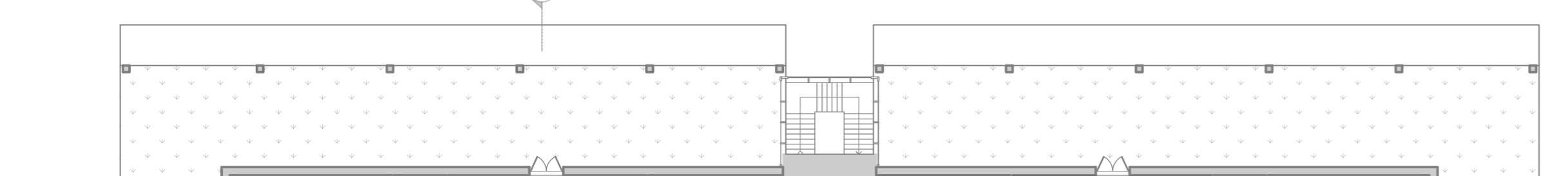
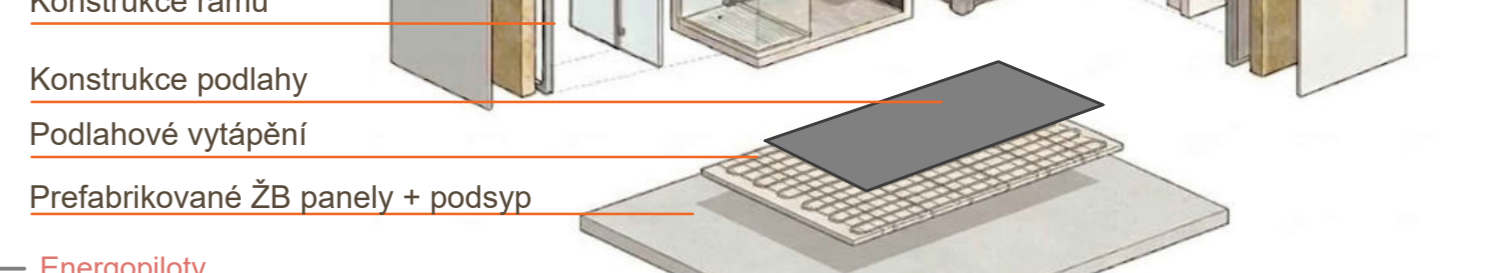
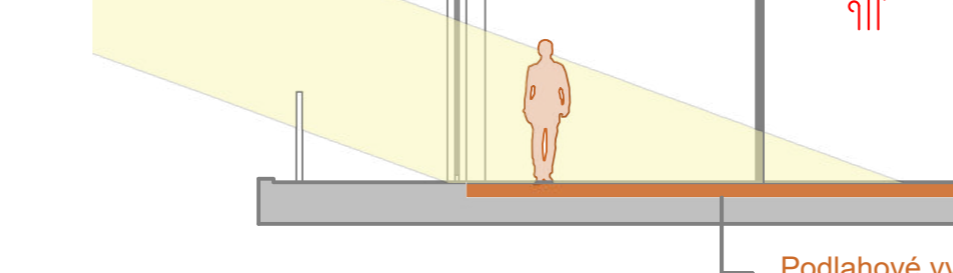
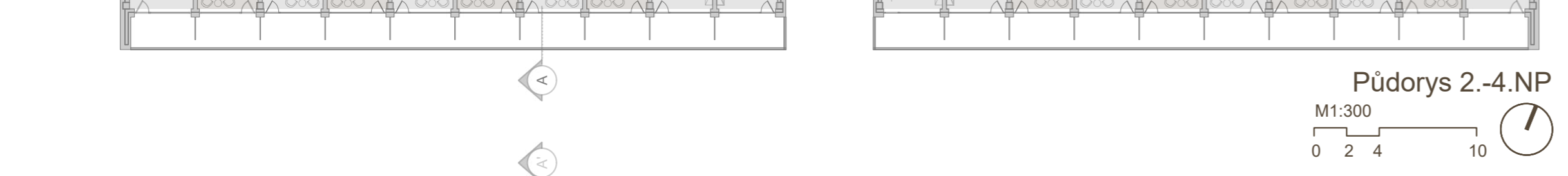
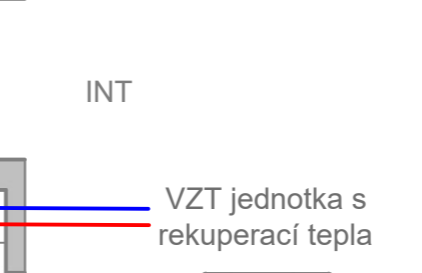
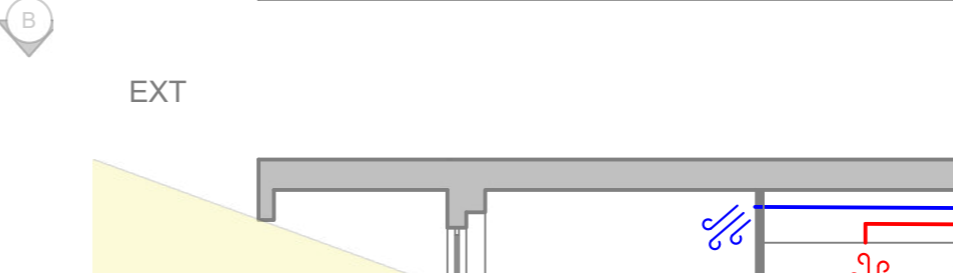
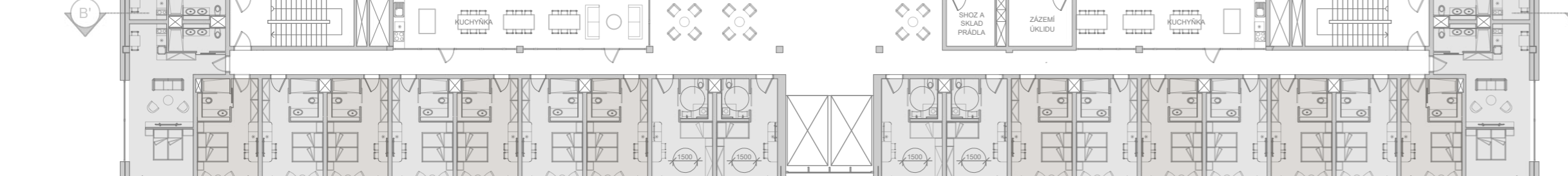
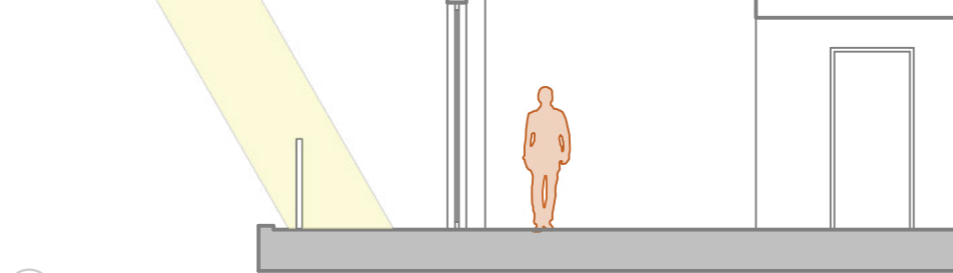
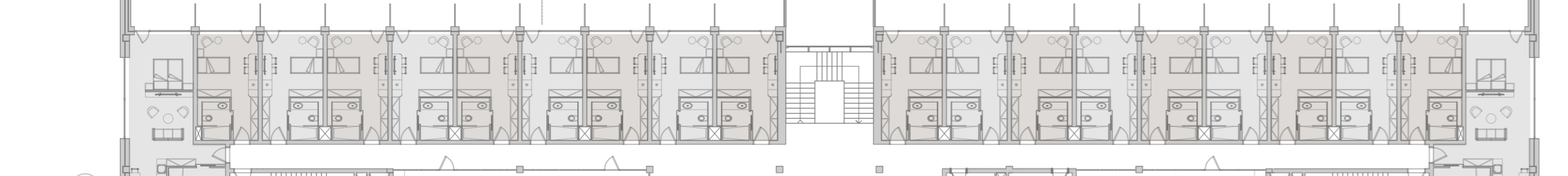
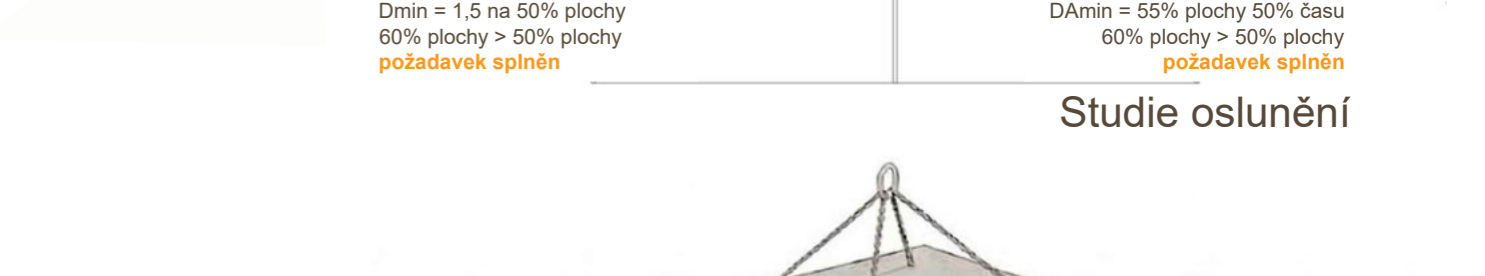
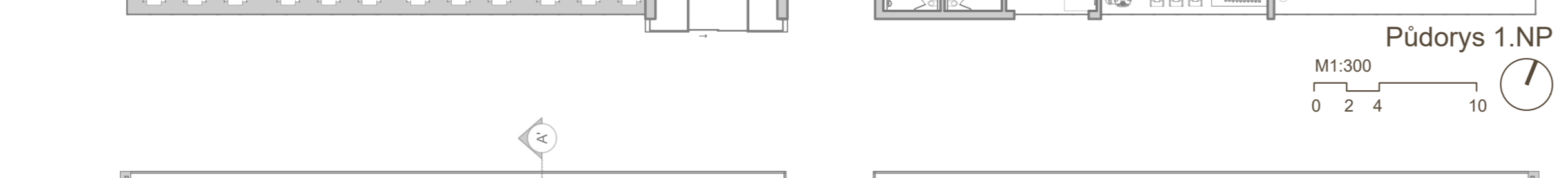
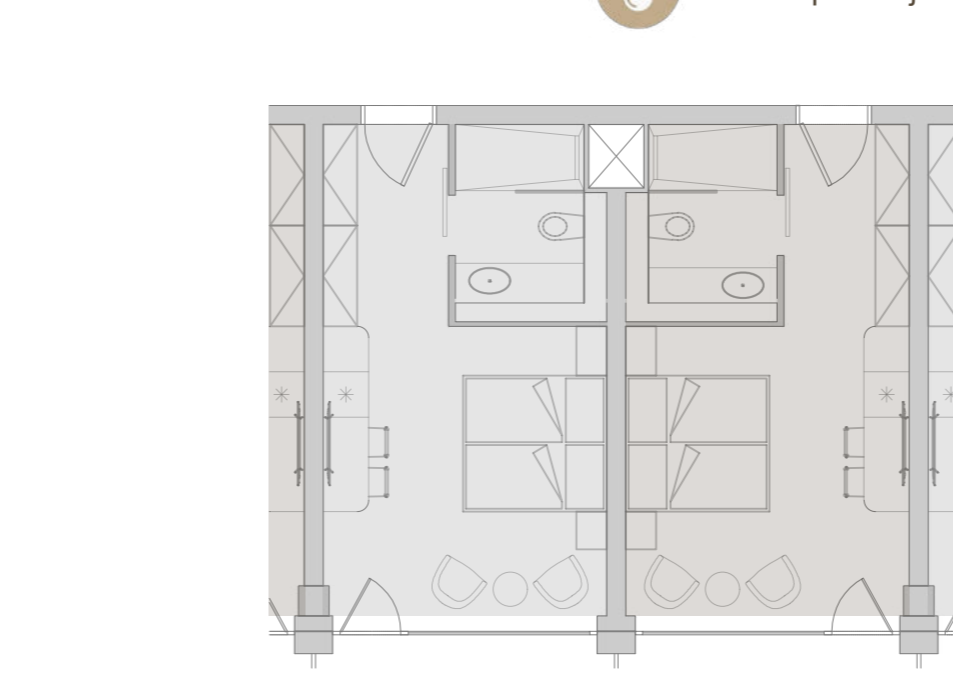
**Jachtklub**

Jachtklub je jakožto součást konceptu lidského těla **prostor, symbolicky ohlížející se za minulostí**. Jedná se o nejstarší jachtklub v Bělehradě. Objekt se nachází v přímém kontaktu s vodní hladinou a na které je umístěno nové navržení můla se zatečením pro převoznicí a propojuje jachtklub s areálem sportu.

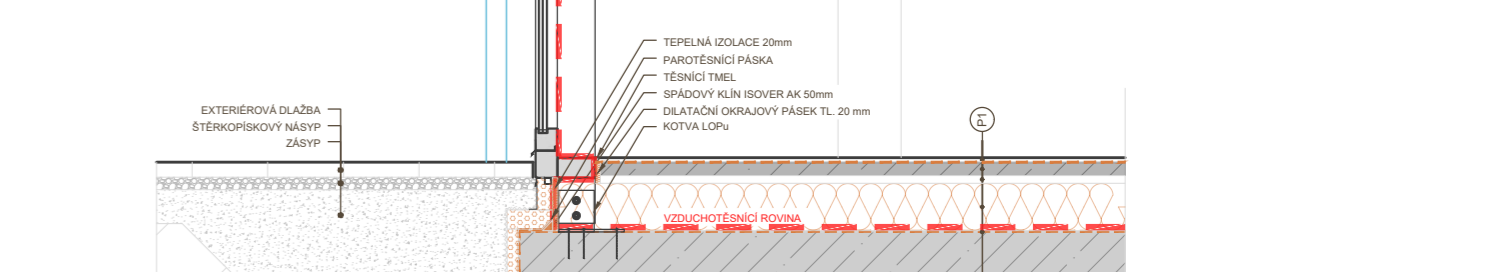
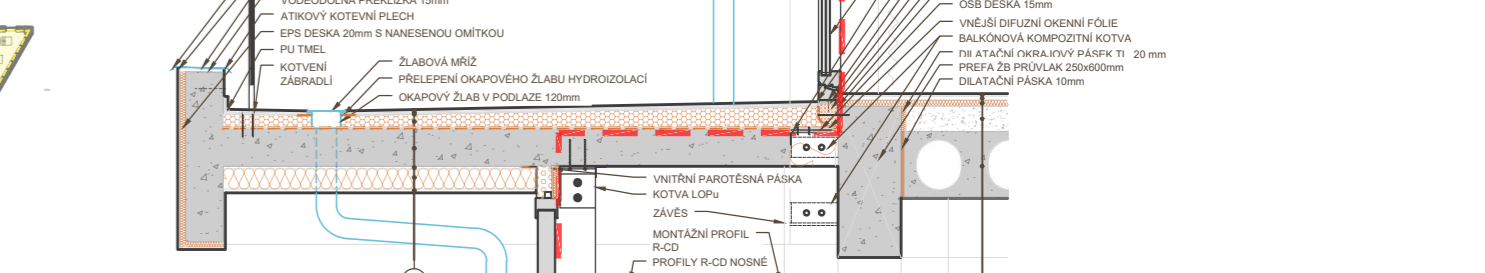
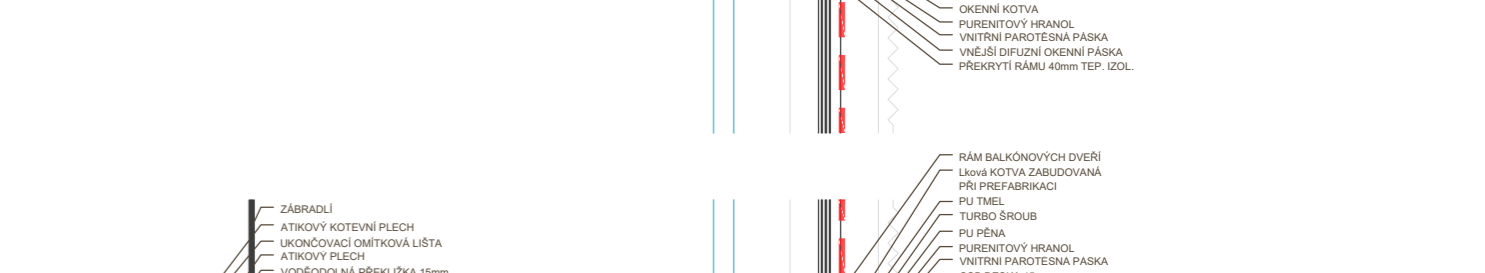
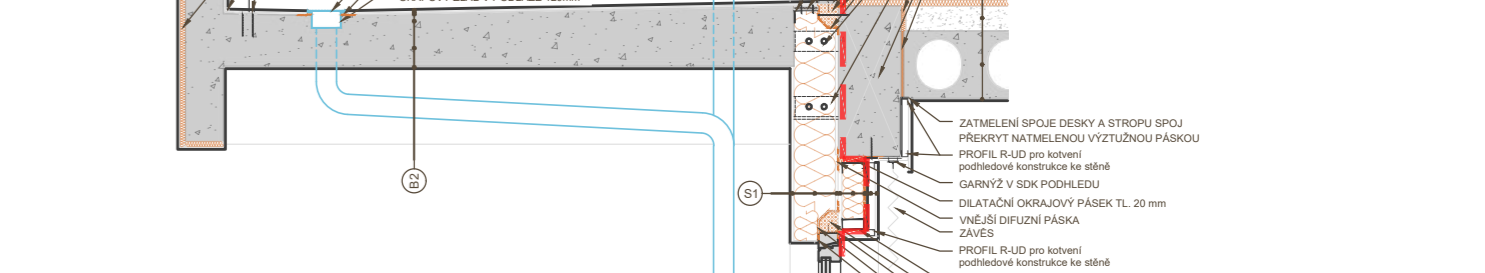
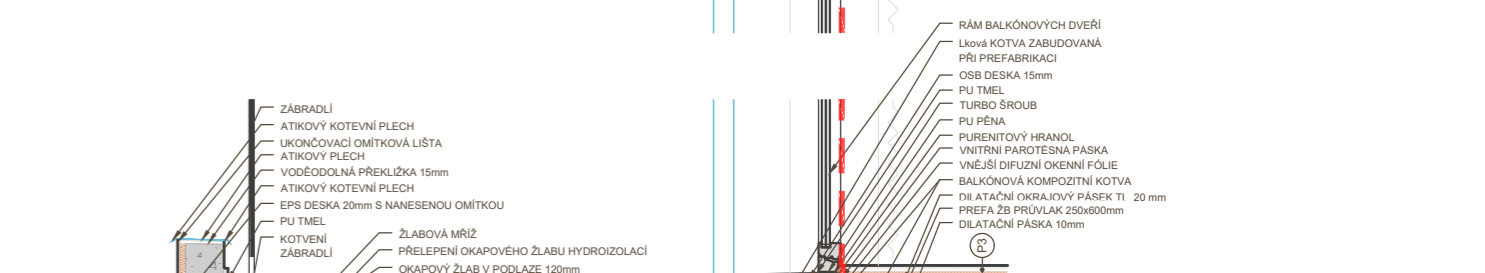
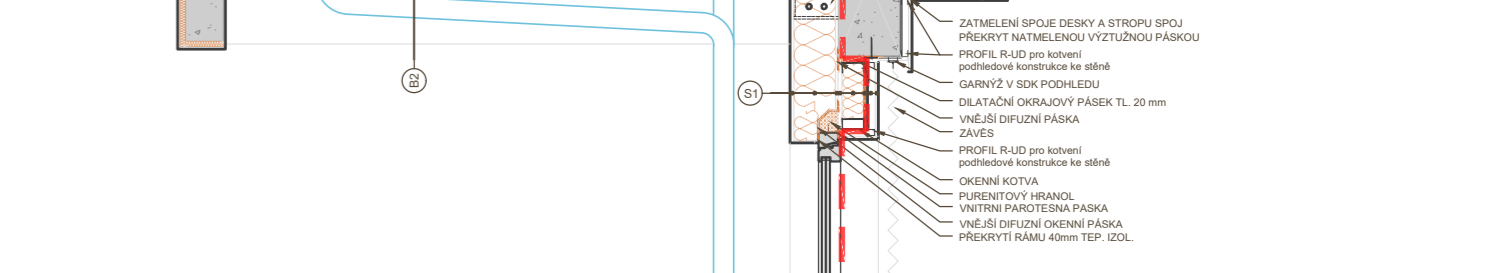
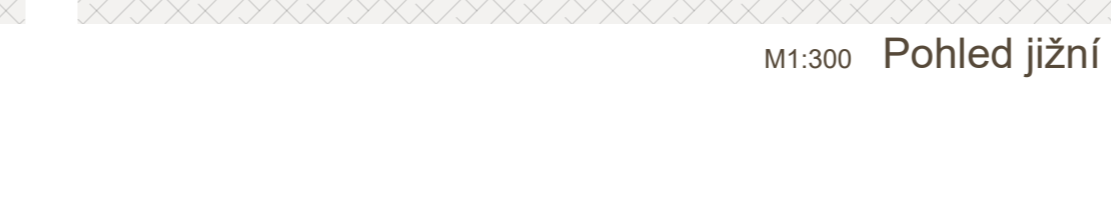
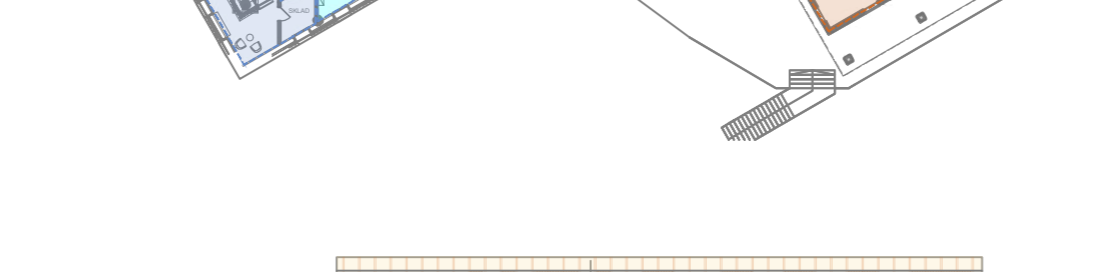
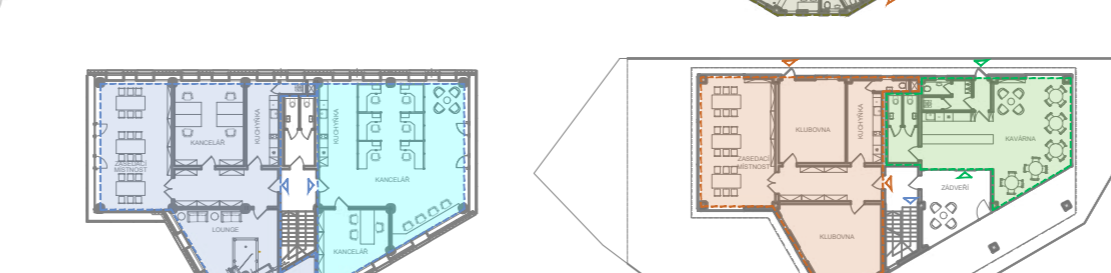
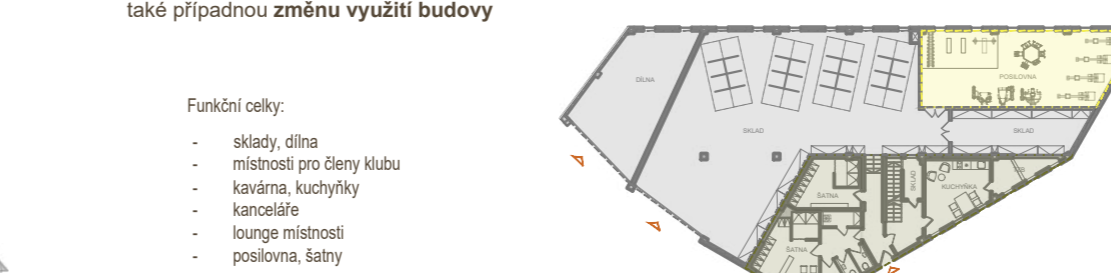
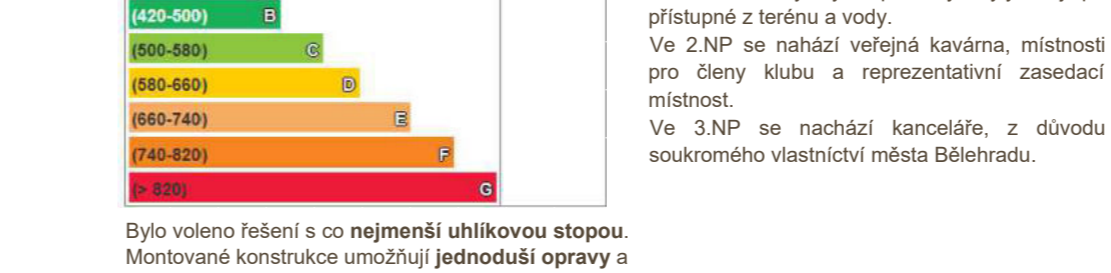
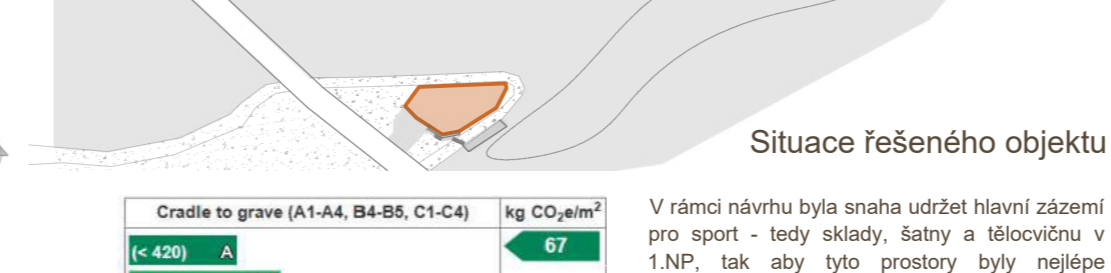
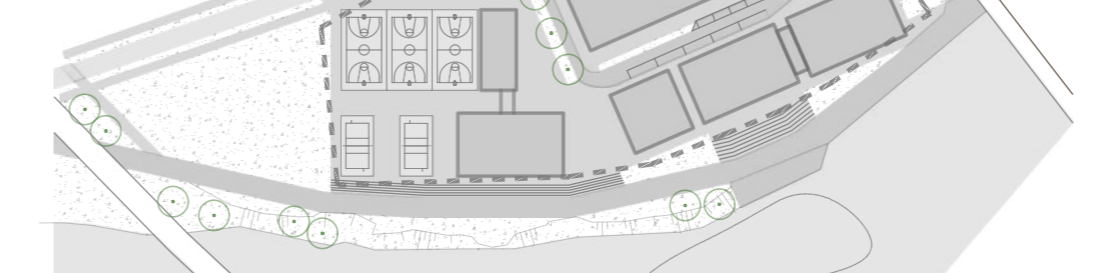
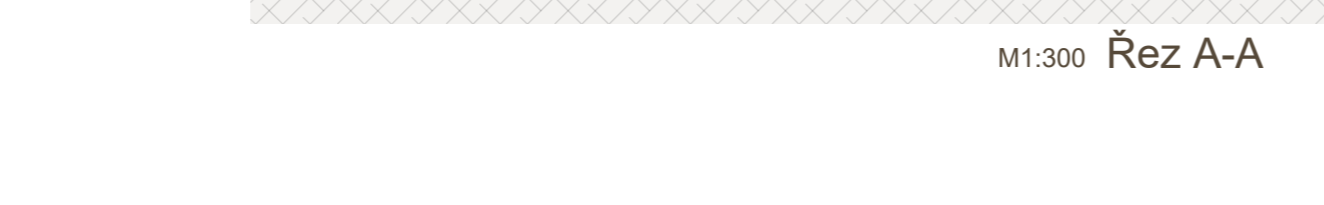
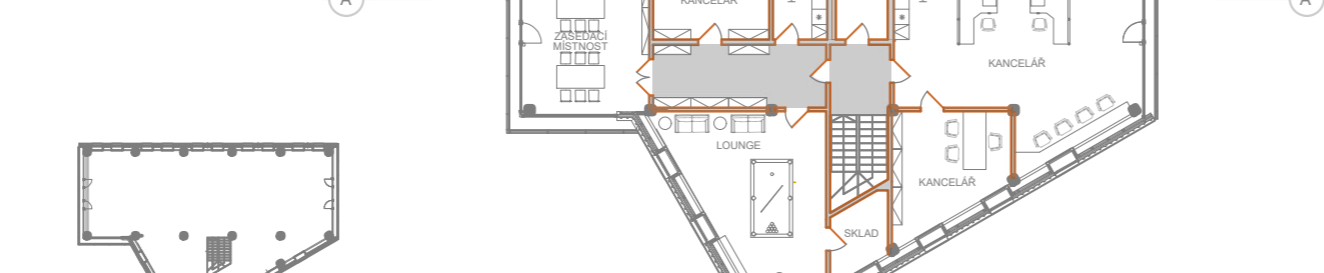
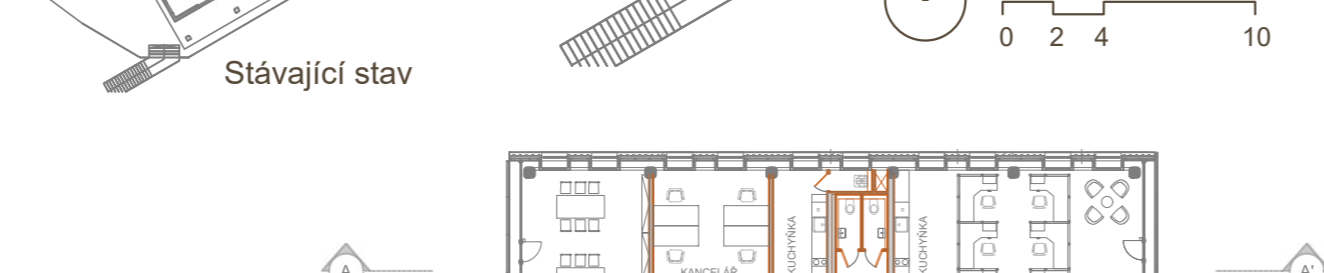
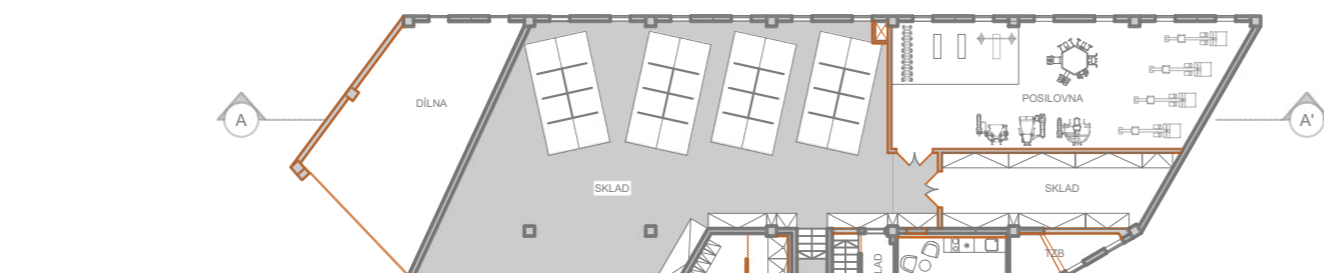


- 1 Komunitní centrum - (tvář) - vítá, komunikuje, spojuje lidi a pohyby
- 2 Parkovací dům - (pařez) - opora, chrání areál před ruchem z ulice a před plněním automobilů v areálu
- 3 Aréna pro vodní sporty - (savky) - fyzický výkon, energie, síla
- 4 Ubytování - (srdce a plíce) - regenerace a odpočinek
- 5 Kaviárna, lékárna, sportovní vybavení - (trávicí systém) - zásobárna energie
- 6 Muzeum sportu - (mozek) - uchovává paměť sportu, historii a inspiraci
- 7 Záření pro sportovce - (nervový systém) - mentální příprava
- 8 Molo pro převoznicí - (dlaň) - propojení s vodou, výhled
- 9 Jachtklub - (ohlédnutí se za minulostí) - nejstarší jachtklub v Bělehradě
- 10 Proměnlivé a cesty - (oční síť) vedoucí od srdce
- 11 Reka - proudí jako krev v těle

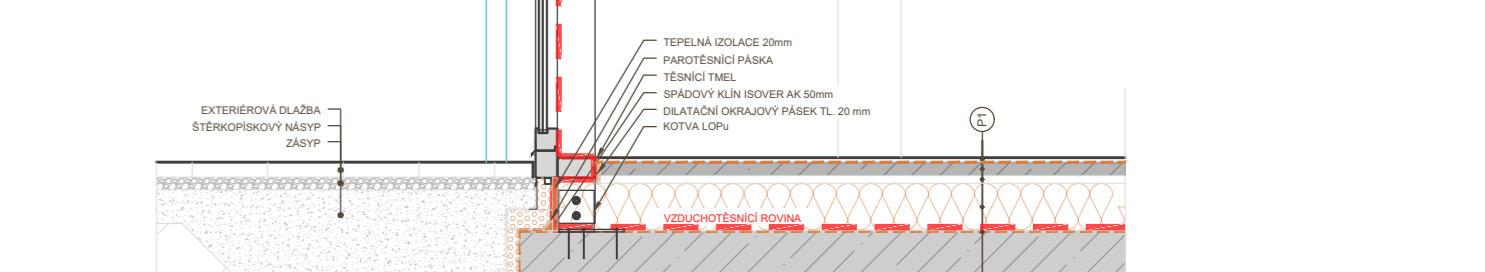
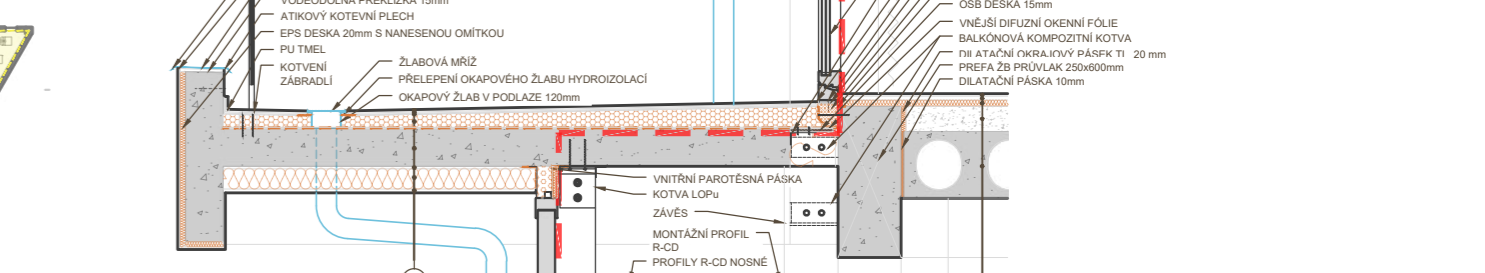
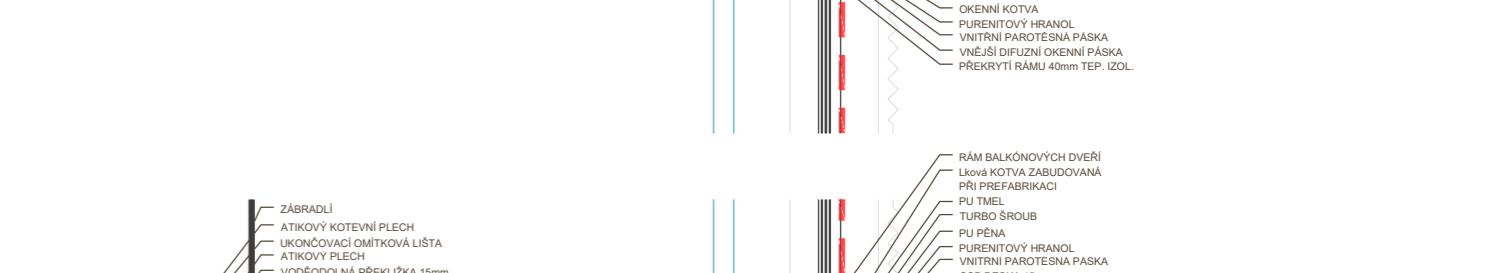
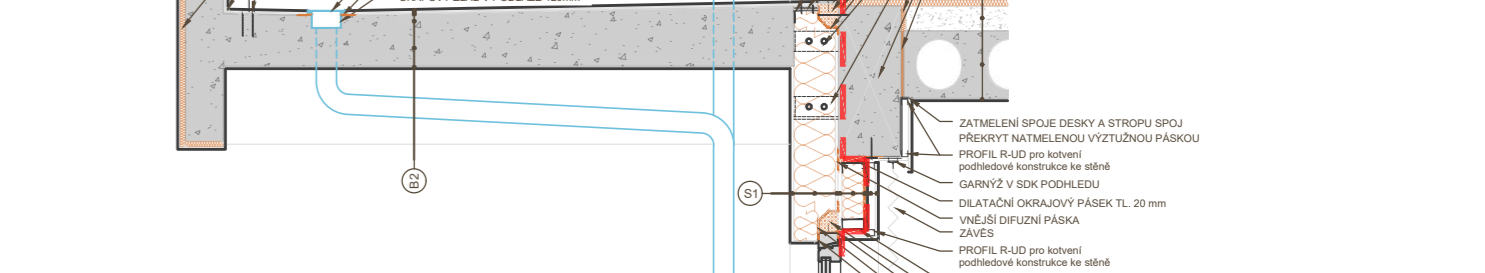
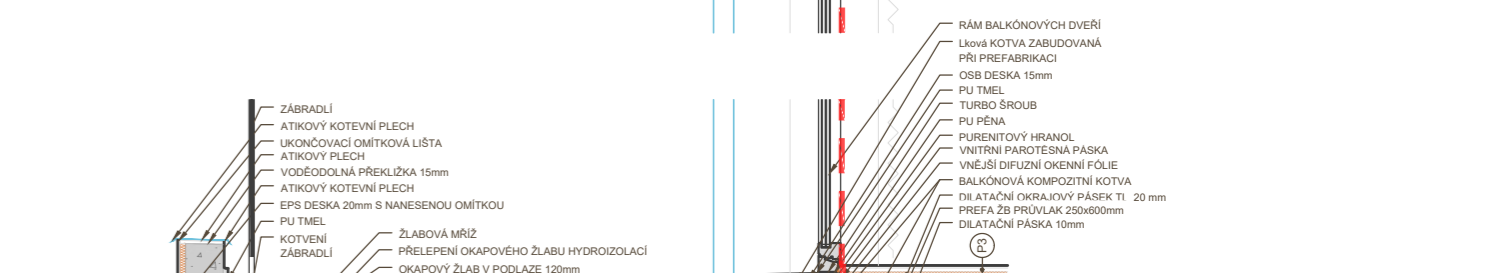
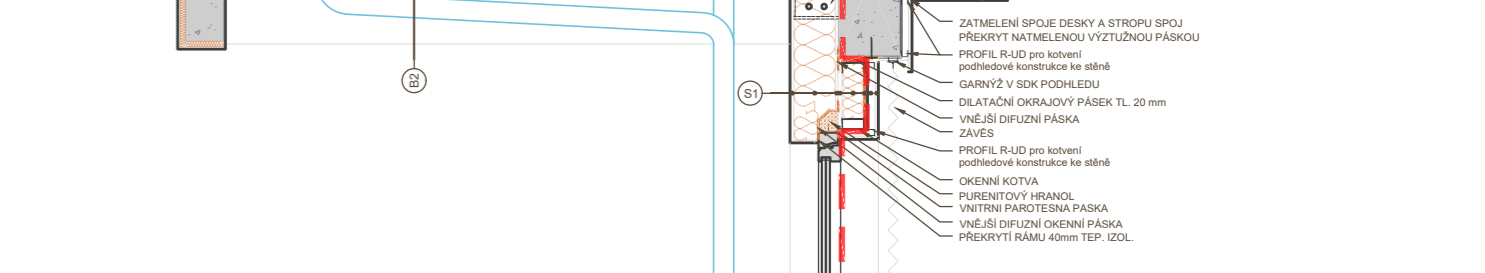
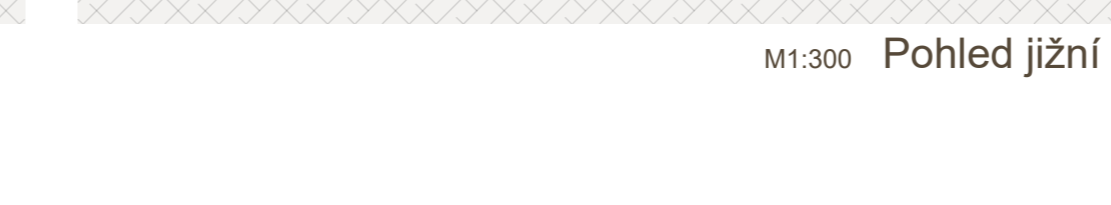
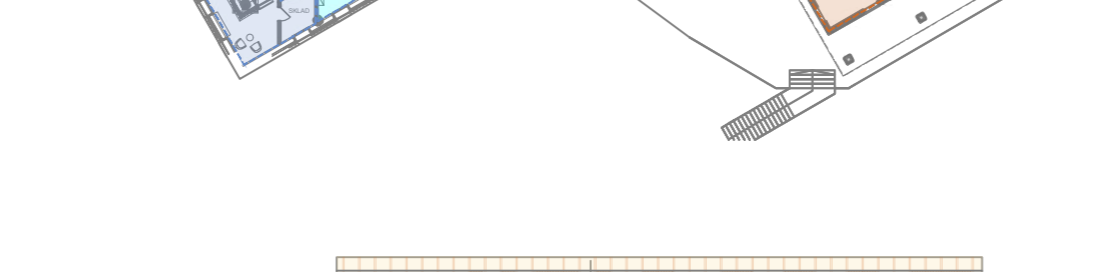
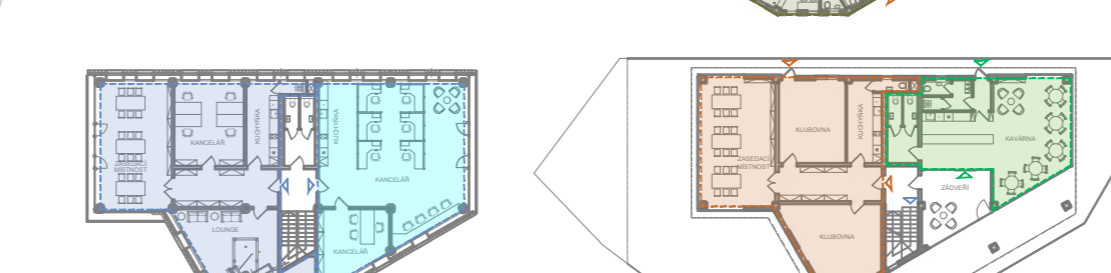
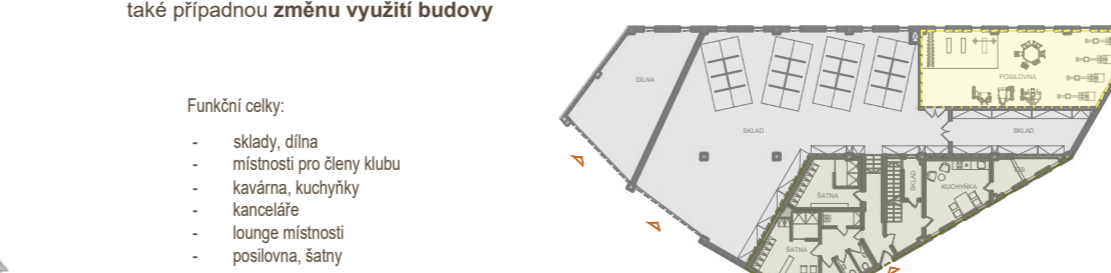
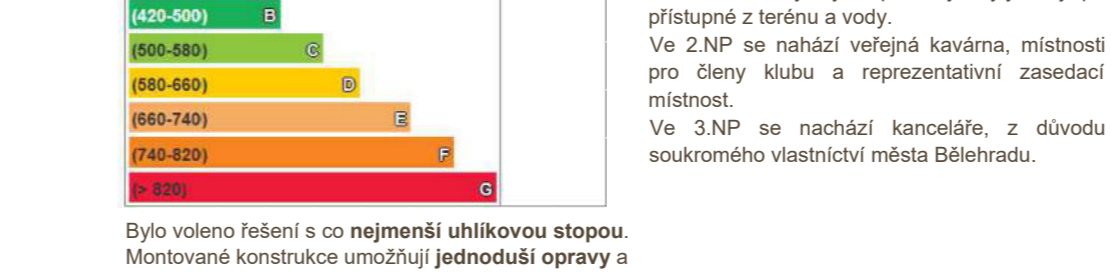
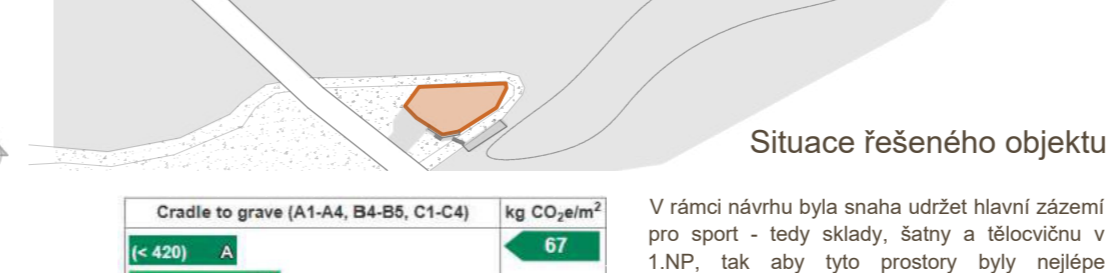
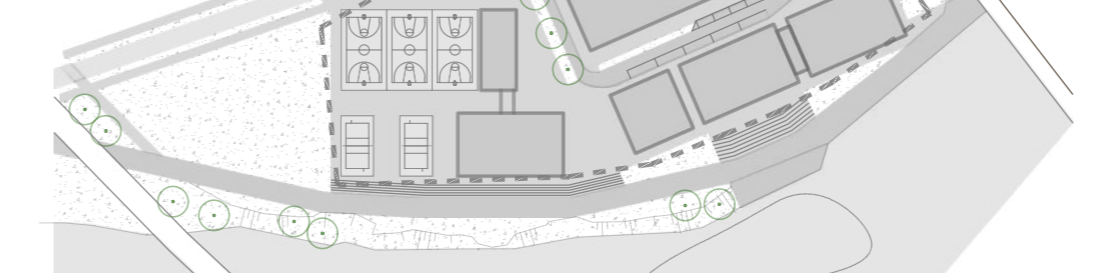
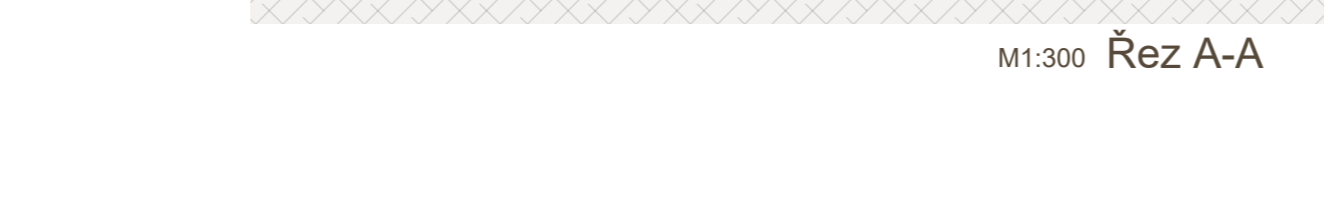
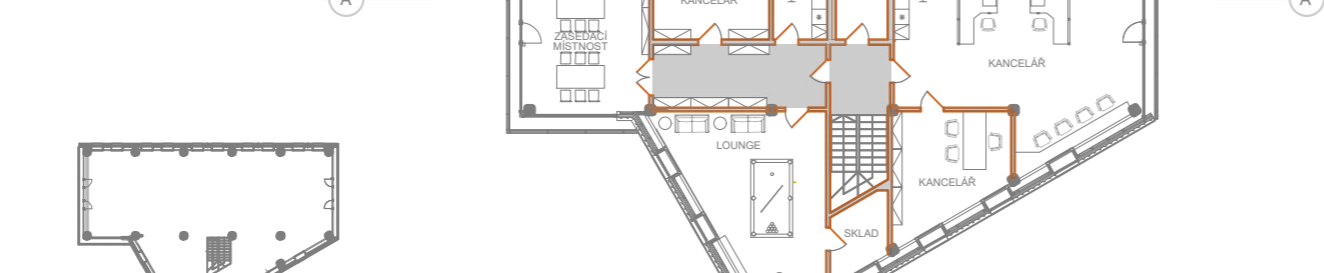
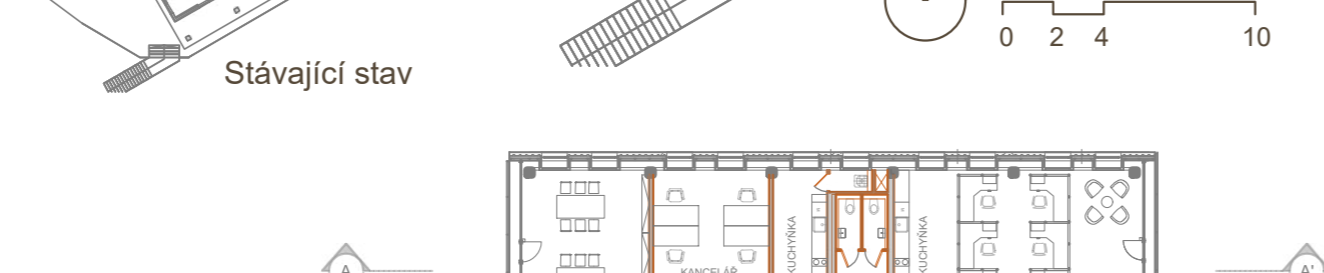
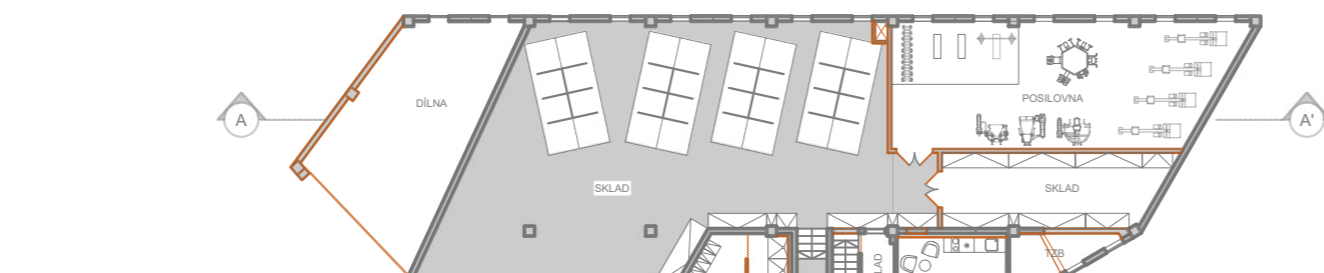
Situace řešeného území s vložnými 1.NP  
M1:750  
0 5 10 25



**JACHTKLUB**



**JACHTKLUB**



**JACHTKLUB**

