



REZIDENČNÍ ČTVRŤ A PROTOTYPOVÁ VESNICE, NORD ISÈRE, FRANCIE

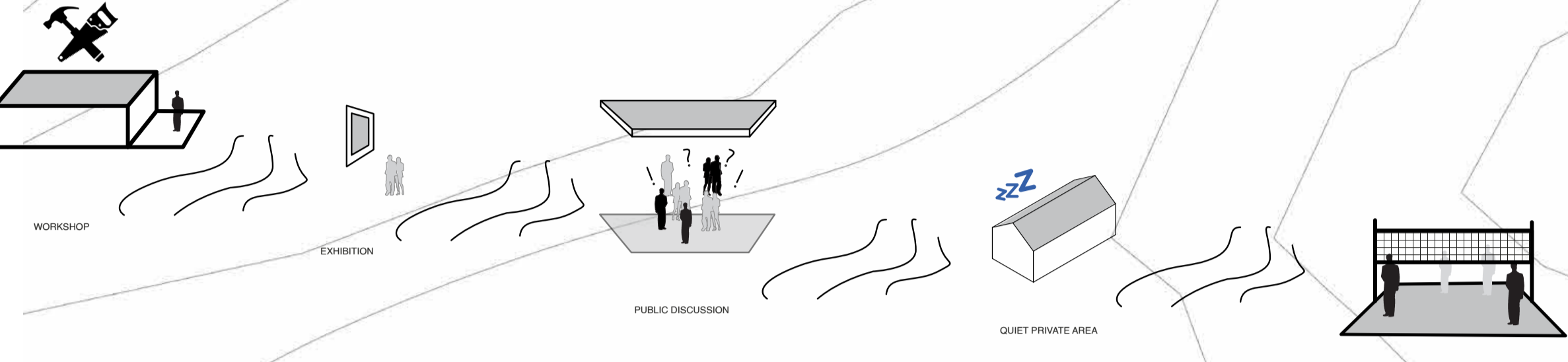
Architecture Saint Gobain Compentiton 2025

TEREZA DUDOVÁ, ŠIMON PROCHÁZKA

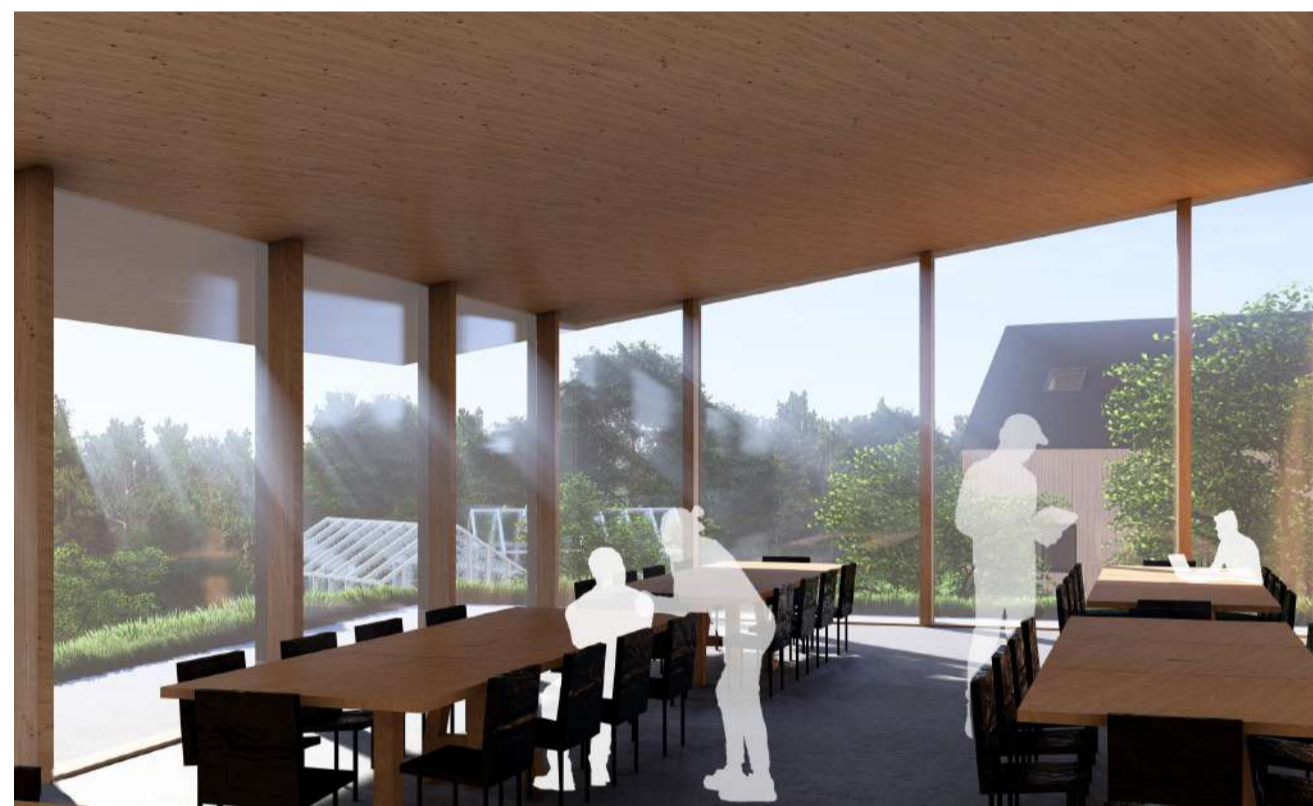
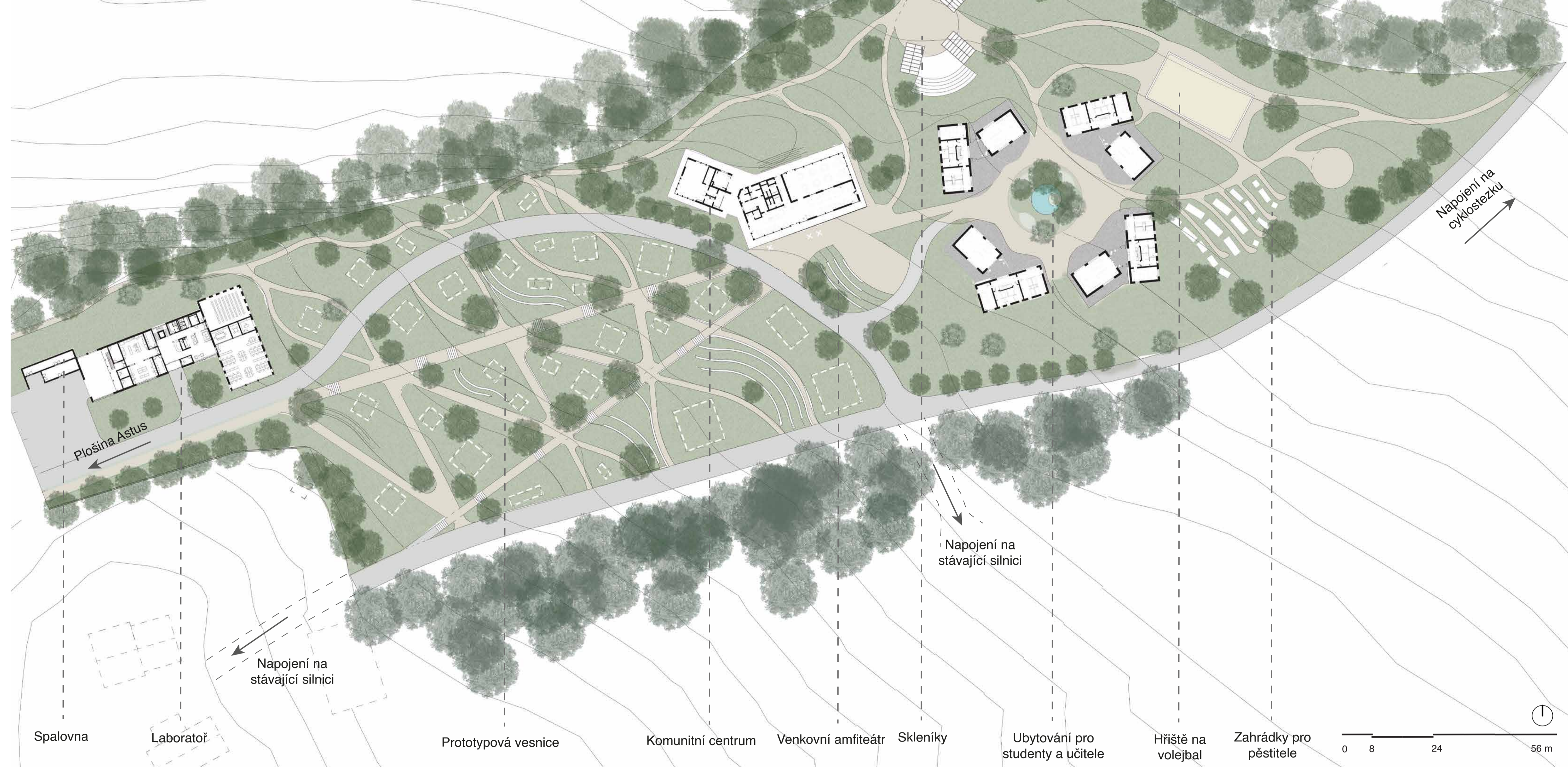
Vedoucí: Ing. Arch. Martin Stark, Ph.D.

Fakulta stavební ČVUT v Praze

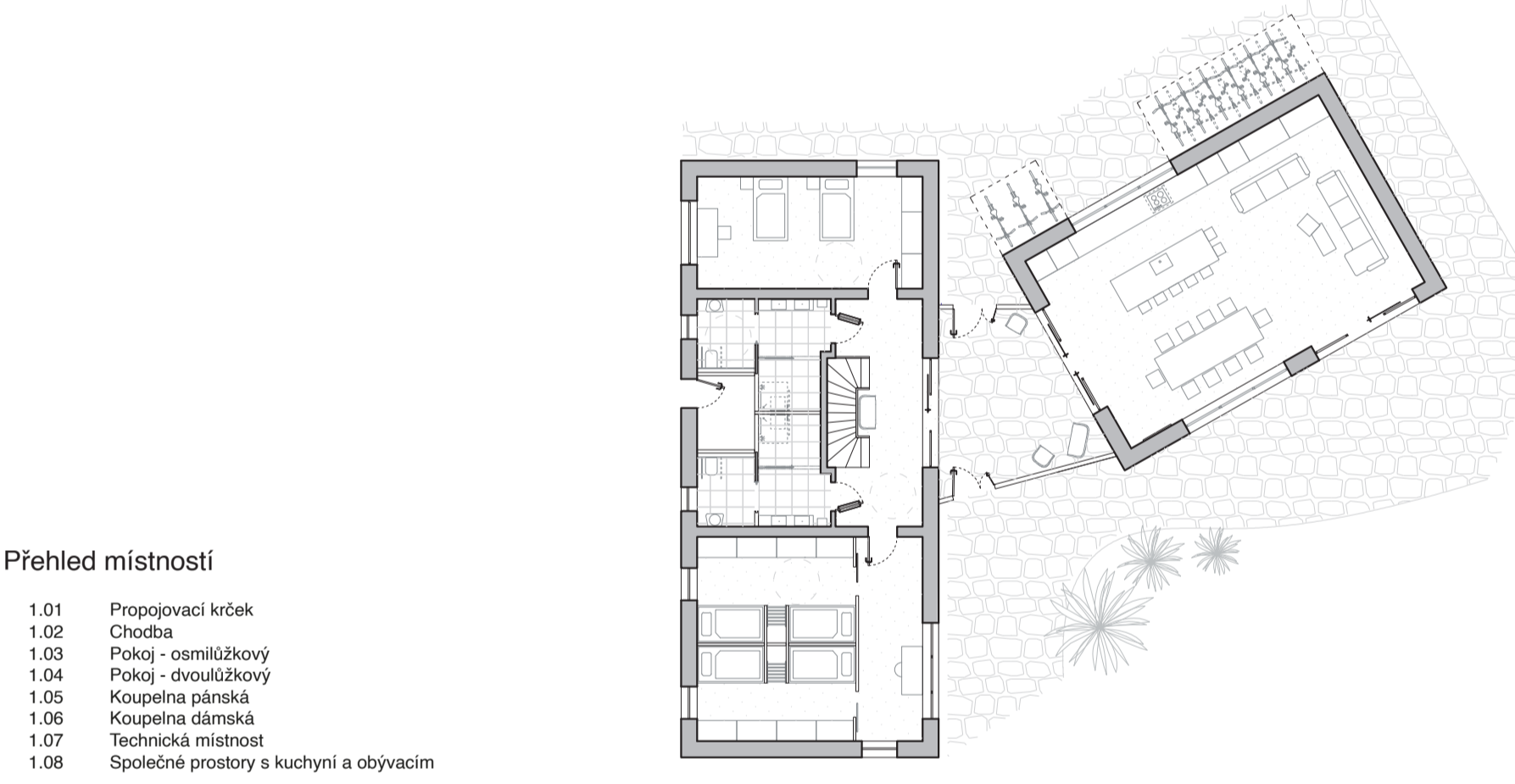
URBANISTICKÝ KONCEPT



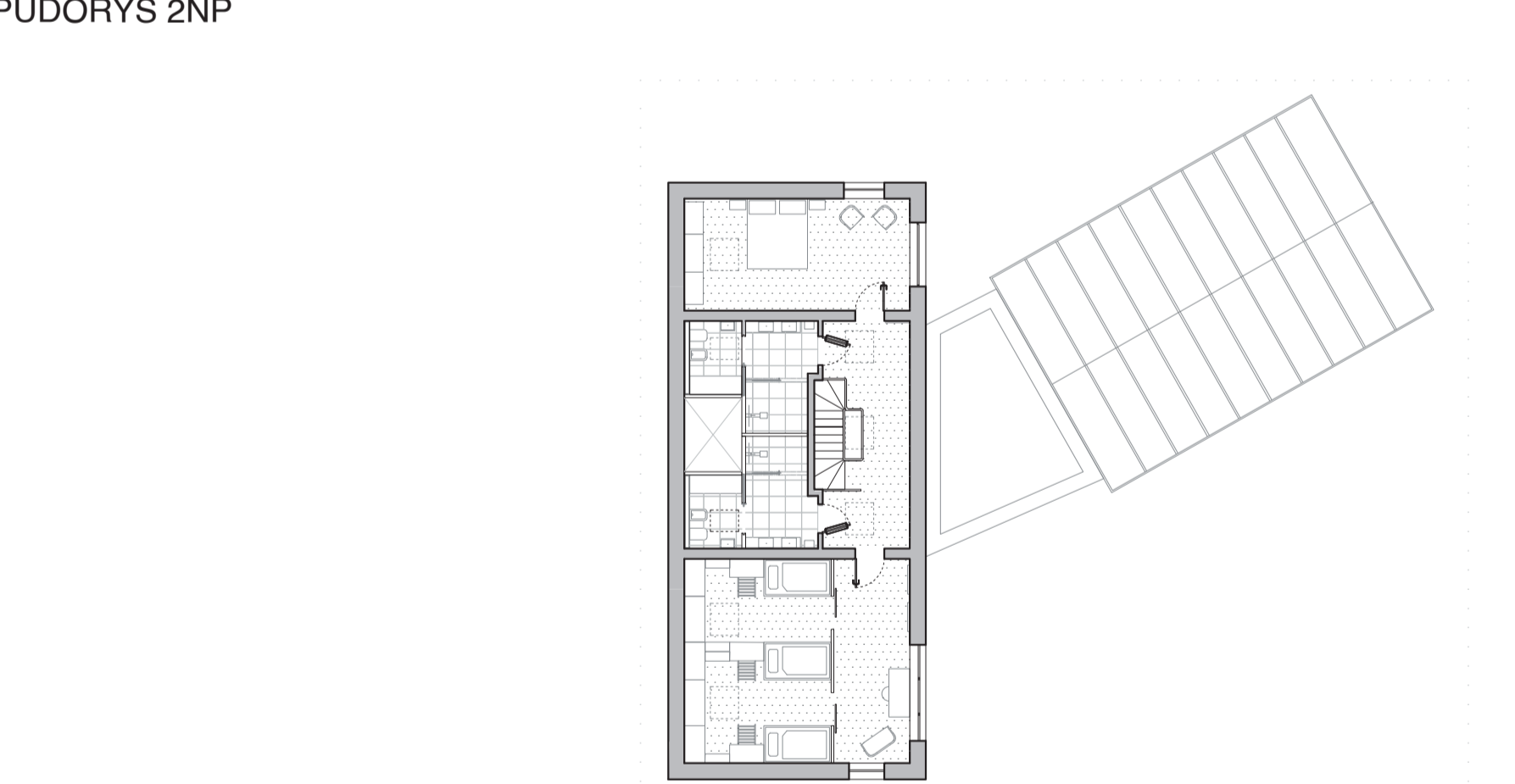
HLAVNÍ SITUACE



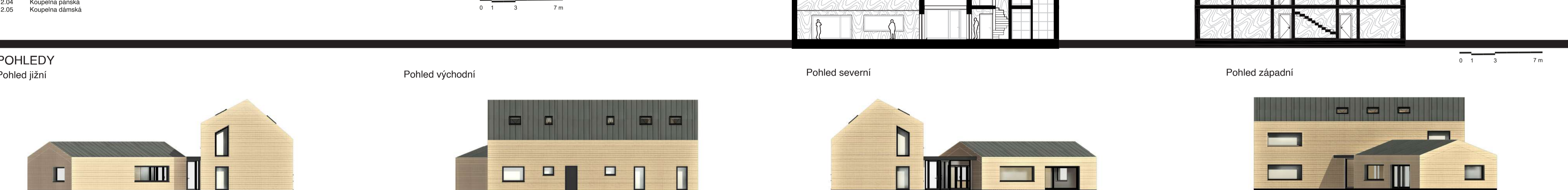
PŮDORYS 1NP



PŮDORYS 2NP

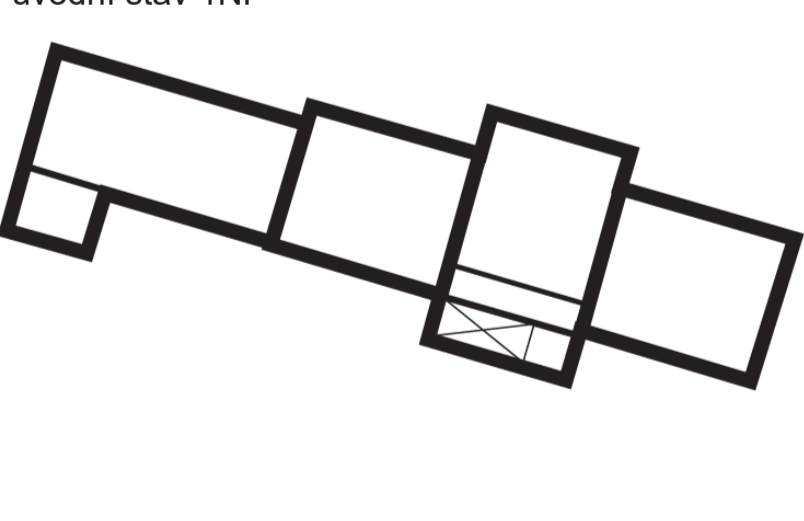


POHLEDY

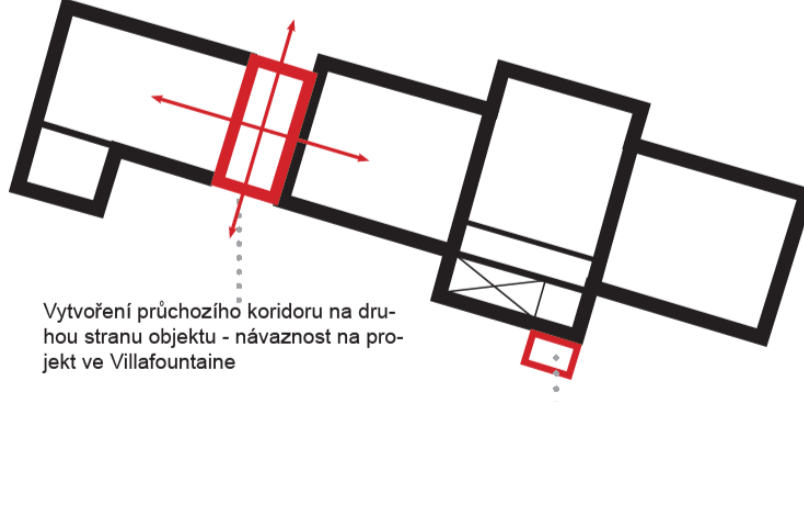


CHIMILIN - STRATEGIE NÁVRHU

Původní stav 1NP



Navrhovaný stav 1NP



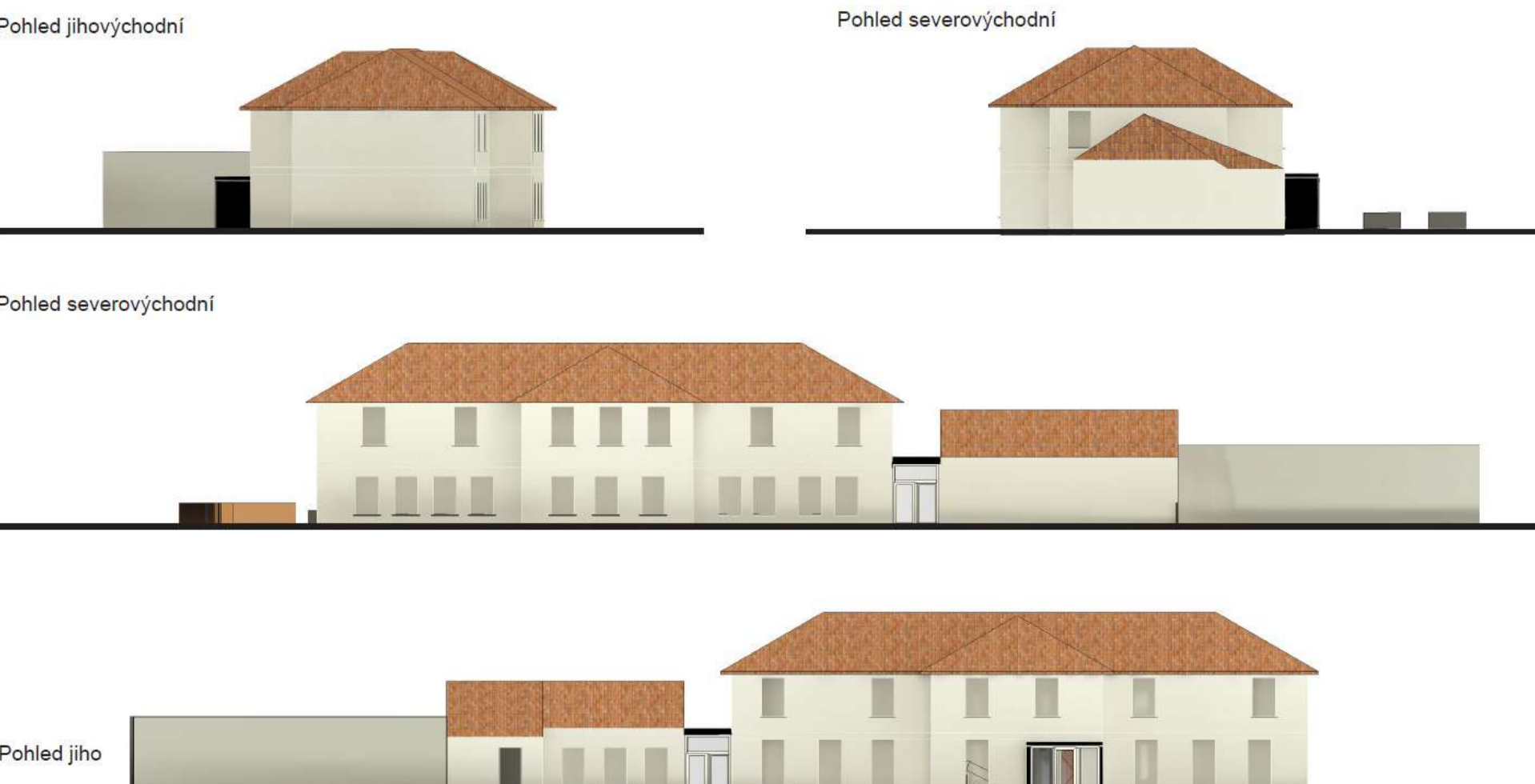
Původní stav 2NP



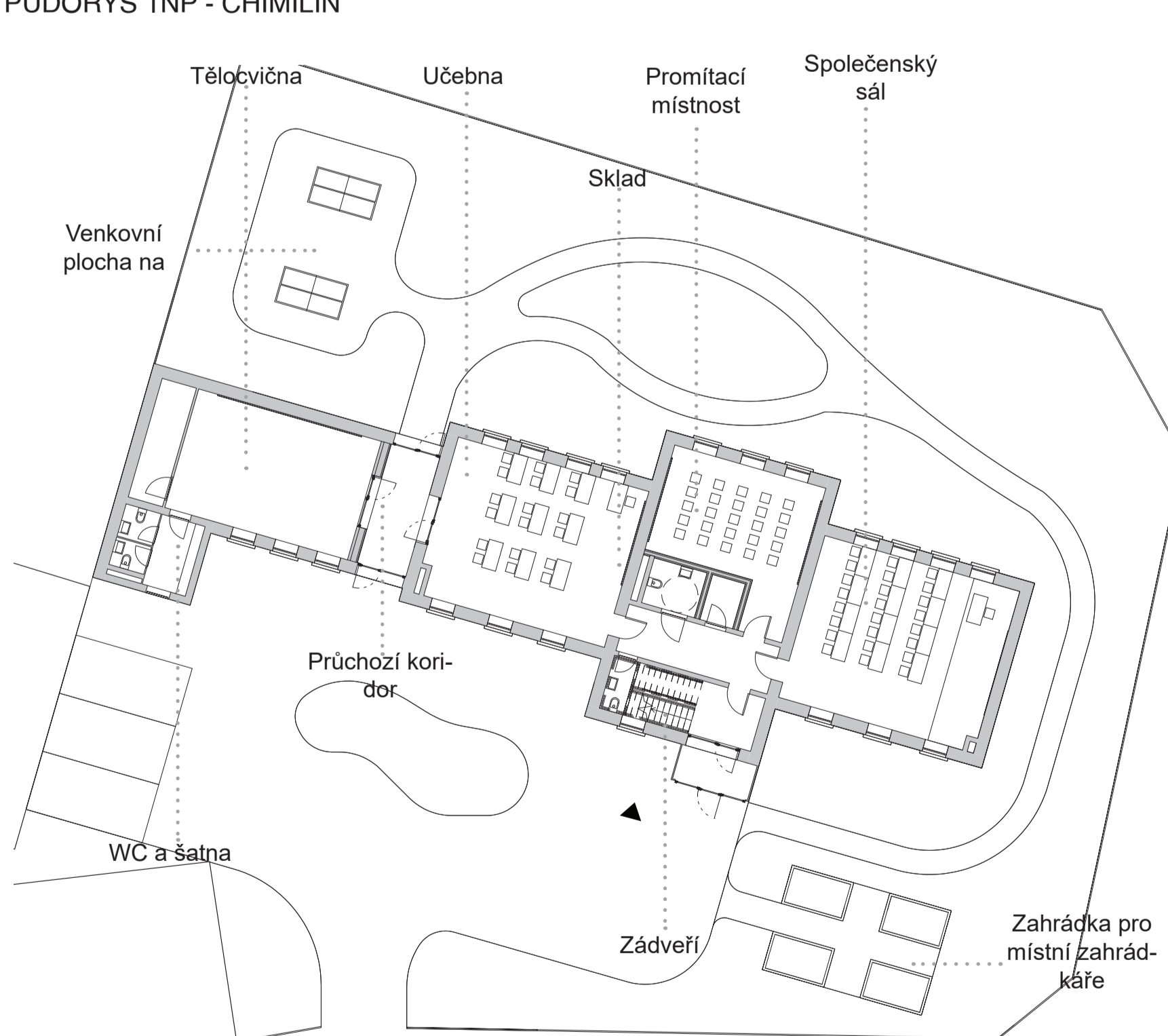
Navrhovaný stav



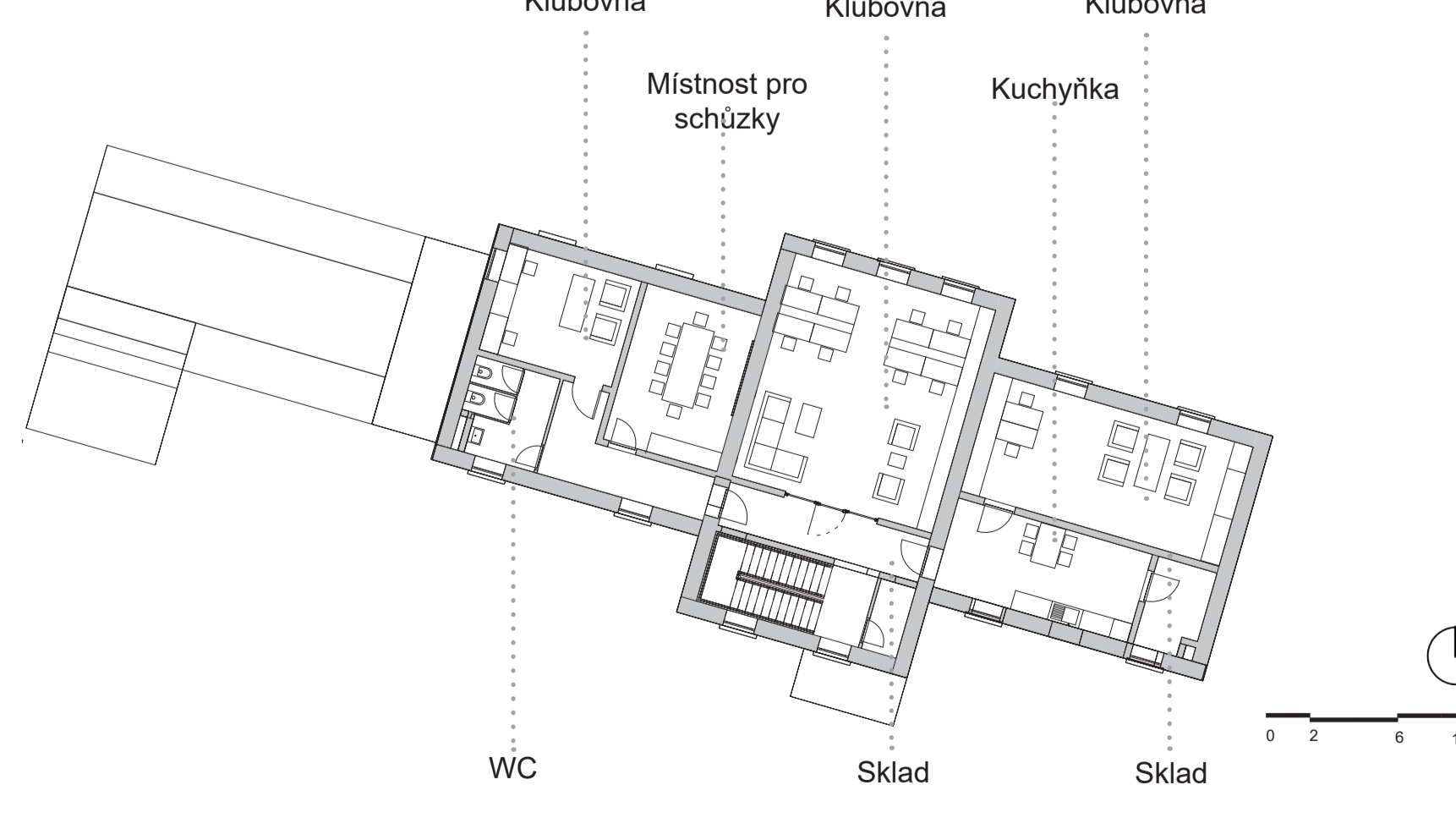
POHLEDY



PŮDORYS 1NP - CHIMILIN



PŮDORYS 2NP - CHIMILIN



POHLEDY

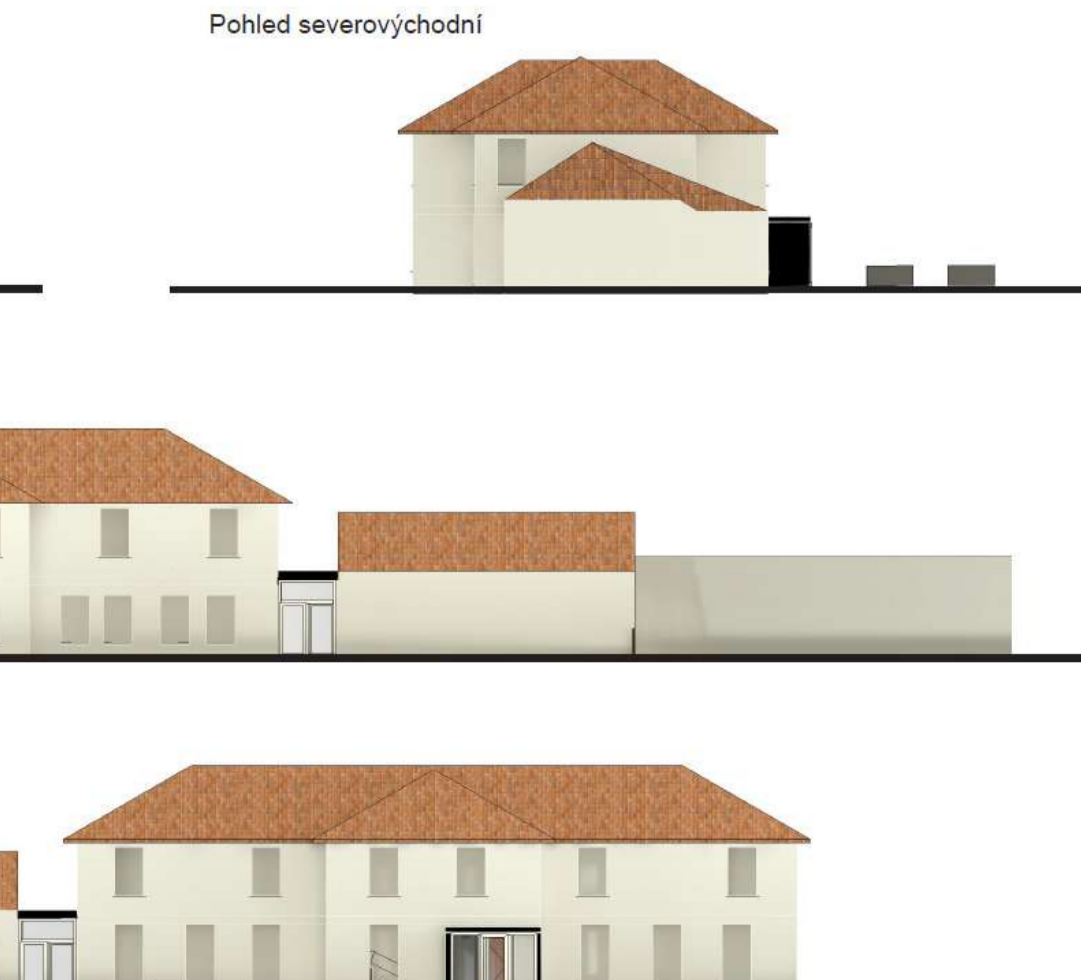
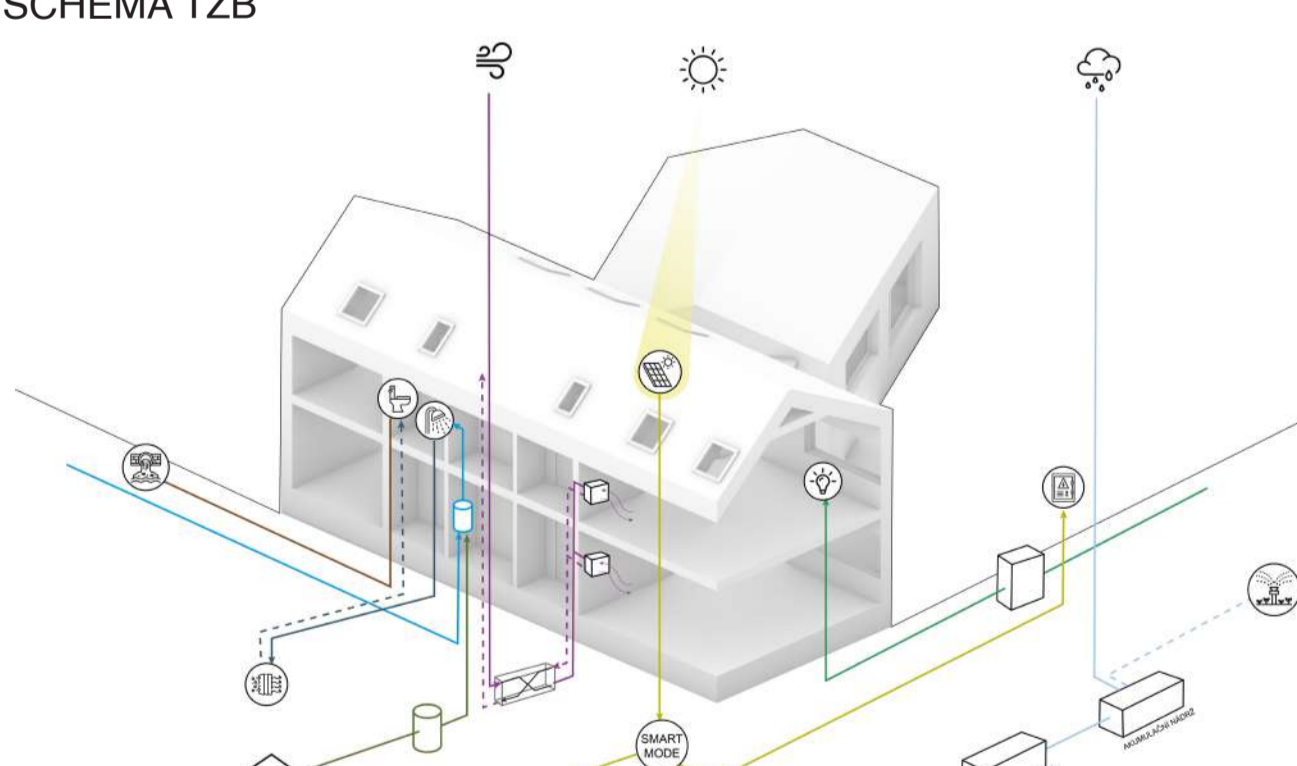
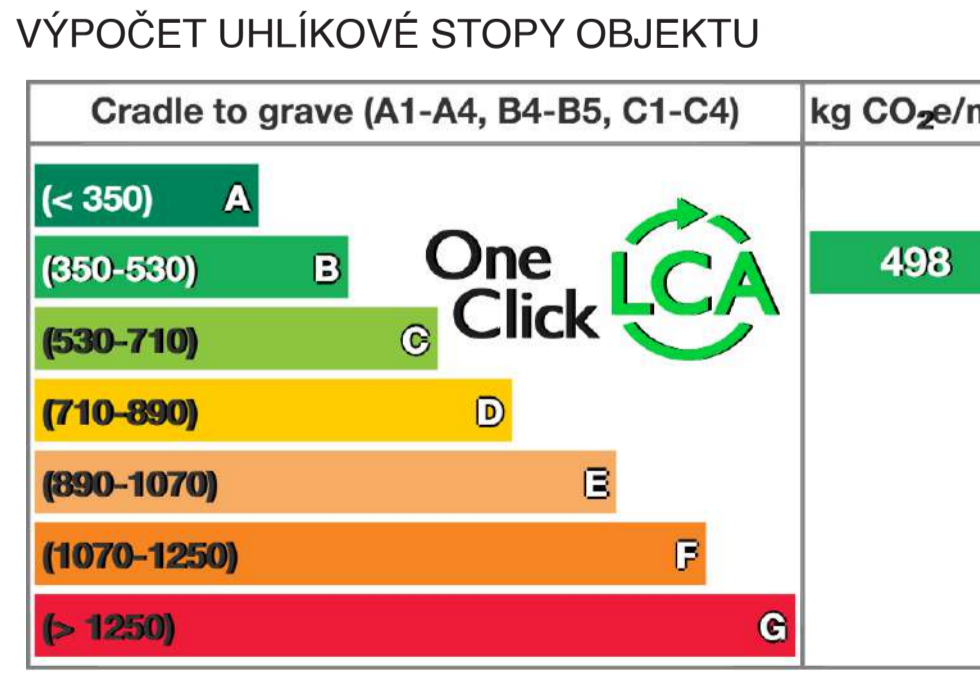


SCHÉMA TZB



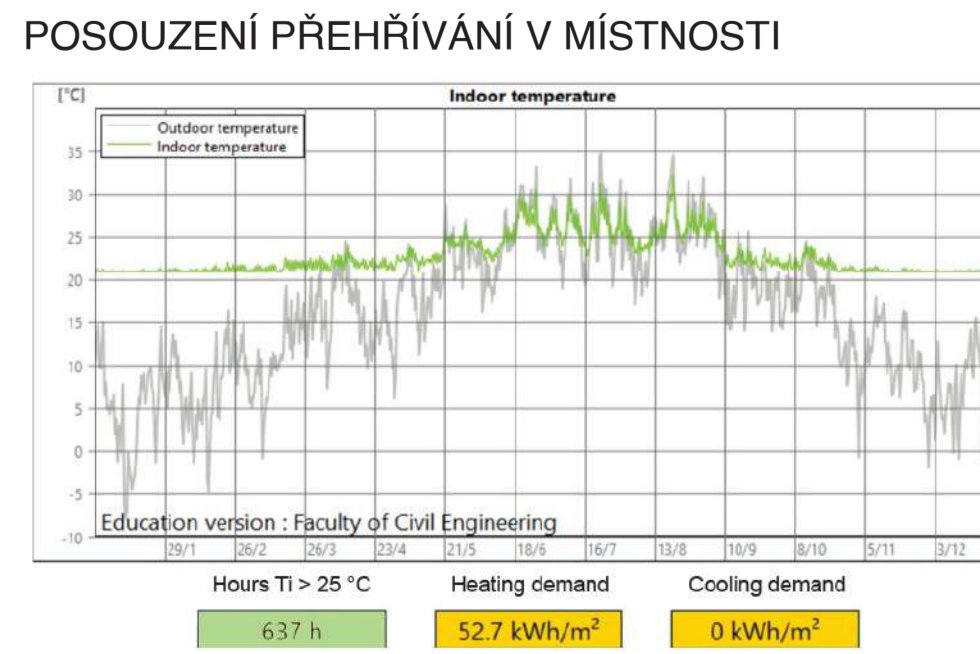
VÝPOČET UHLÍKOVÉ STOPY OBJEKTU



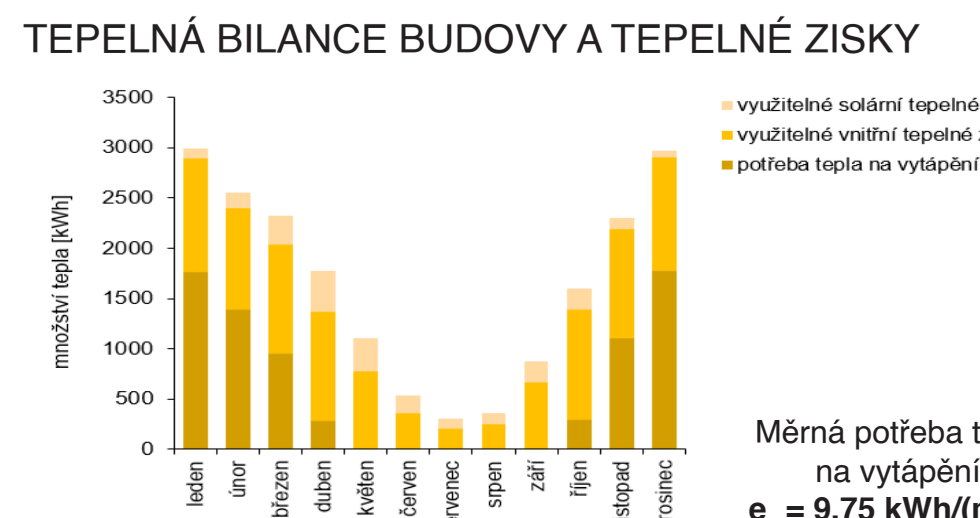
POSOUDENÍ DENNÍHO OSVĚTLENÍ V 1NP



POSOUDENÍ PŘEHŘÍVÁNÍ V MÍSTNOSTI



TEPELNÁ BILANCE BUDOVY A TEPELNÉ ZISKY



Použití materiálu



KOMPLEXNÍ ŘEZ

