

# Les Grands Atelier

## Project Brief

The new campus will house 64 students and researchers, featuring accommodations and a co-creation lab with offices, meeting rooms, and multi-purpose spaces. Common areas such as a living room, play area, bike storage, and laundry should be included. The lab must be accessible from both the Astus platform slab and the main road.

The 2-hectare site will include a prototype village for experimental structures and proposals for future campus facilities like a conference center, dining expansion, exhibition areas, and recreational spaces.

Entrances and internal mobility should be optimized, with design elements enhancing the student experience, views, and connection to nature.

## Urban Concept Development

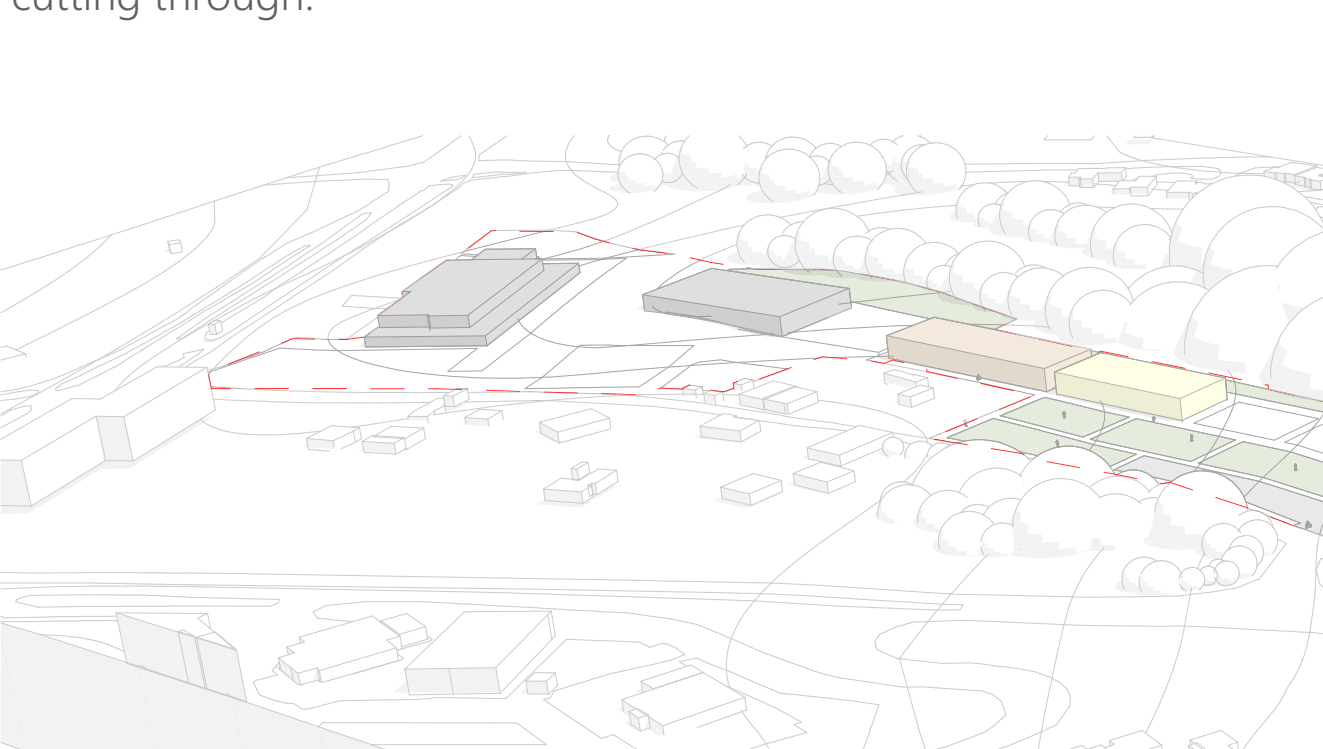
Scale 1:1000



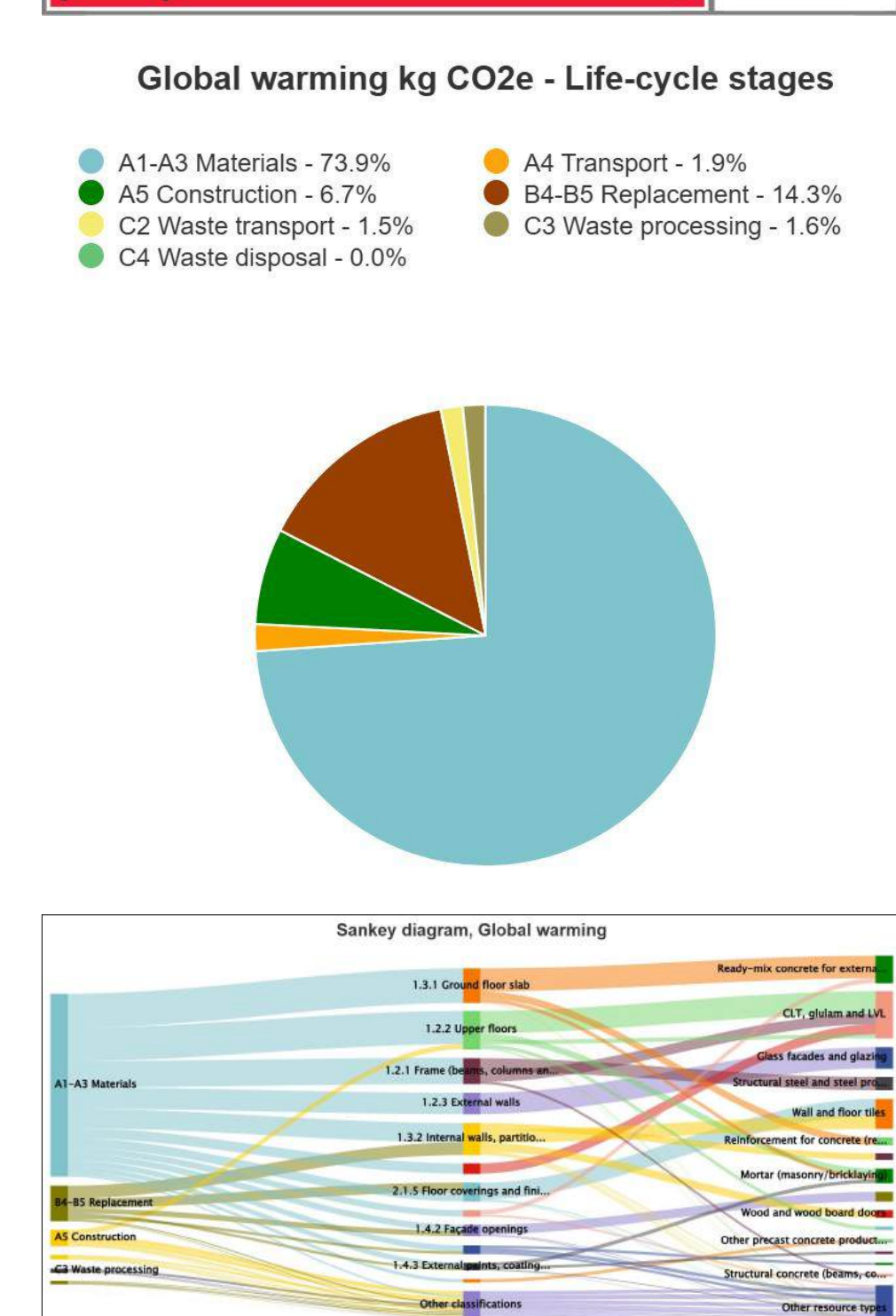
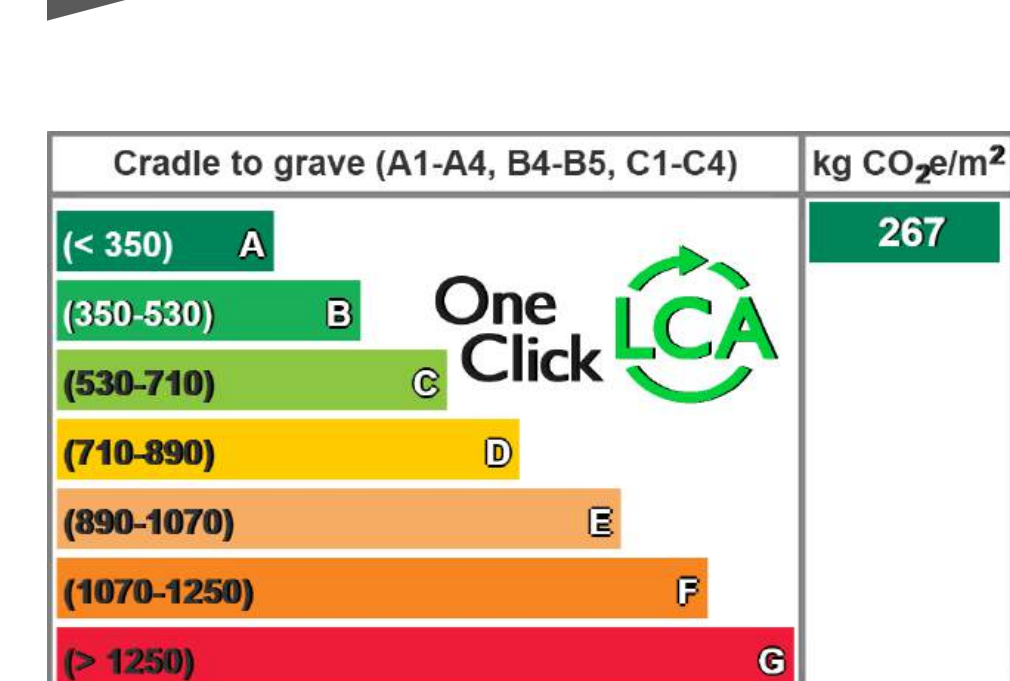
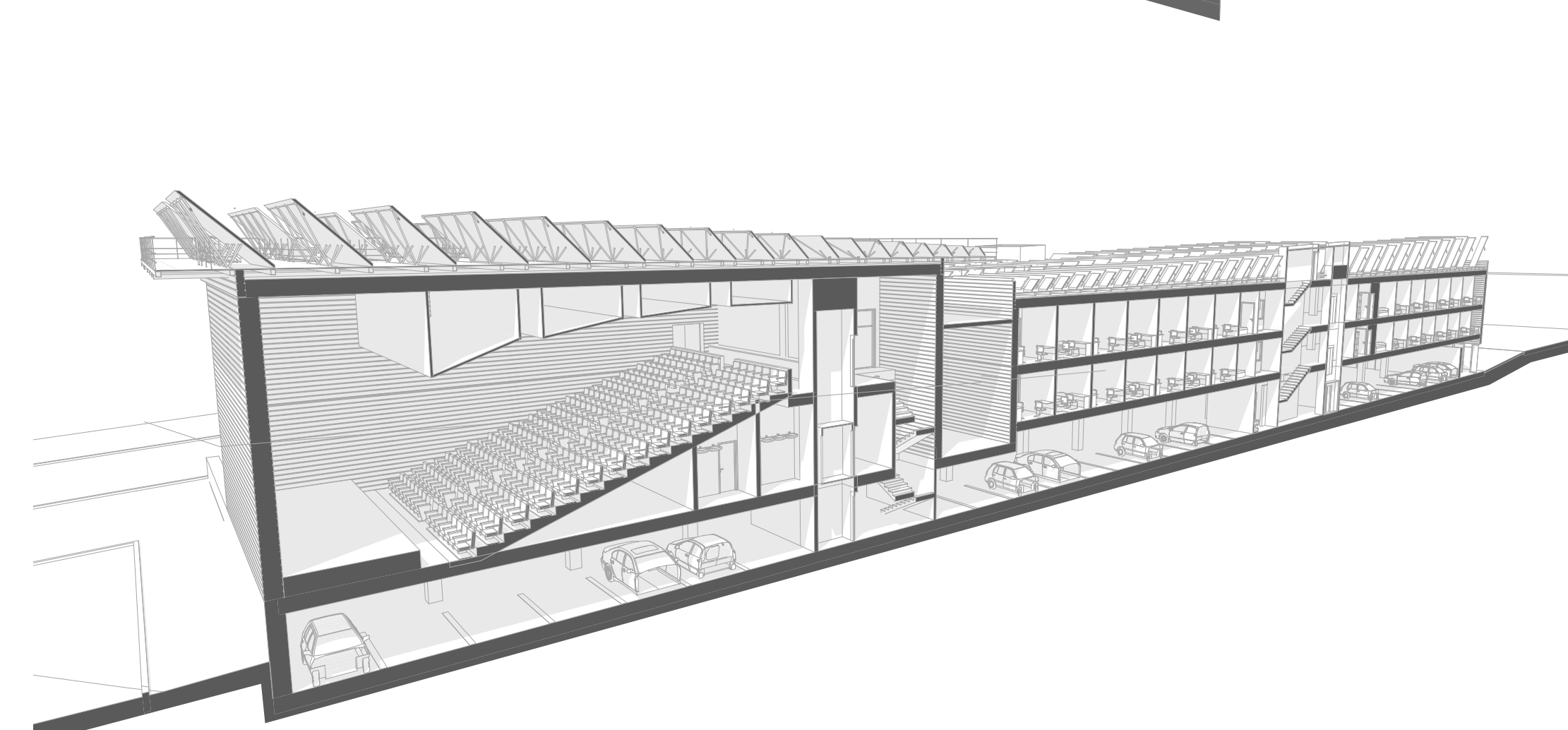
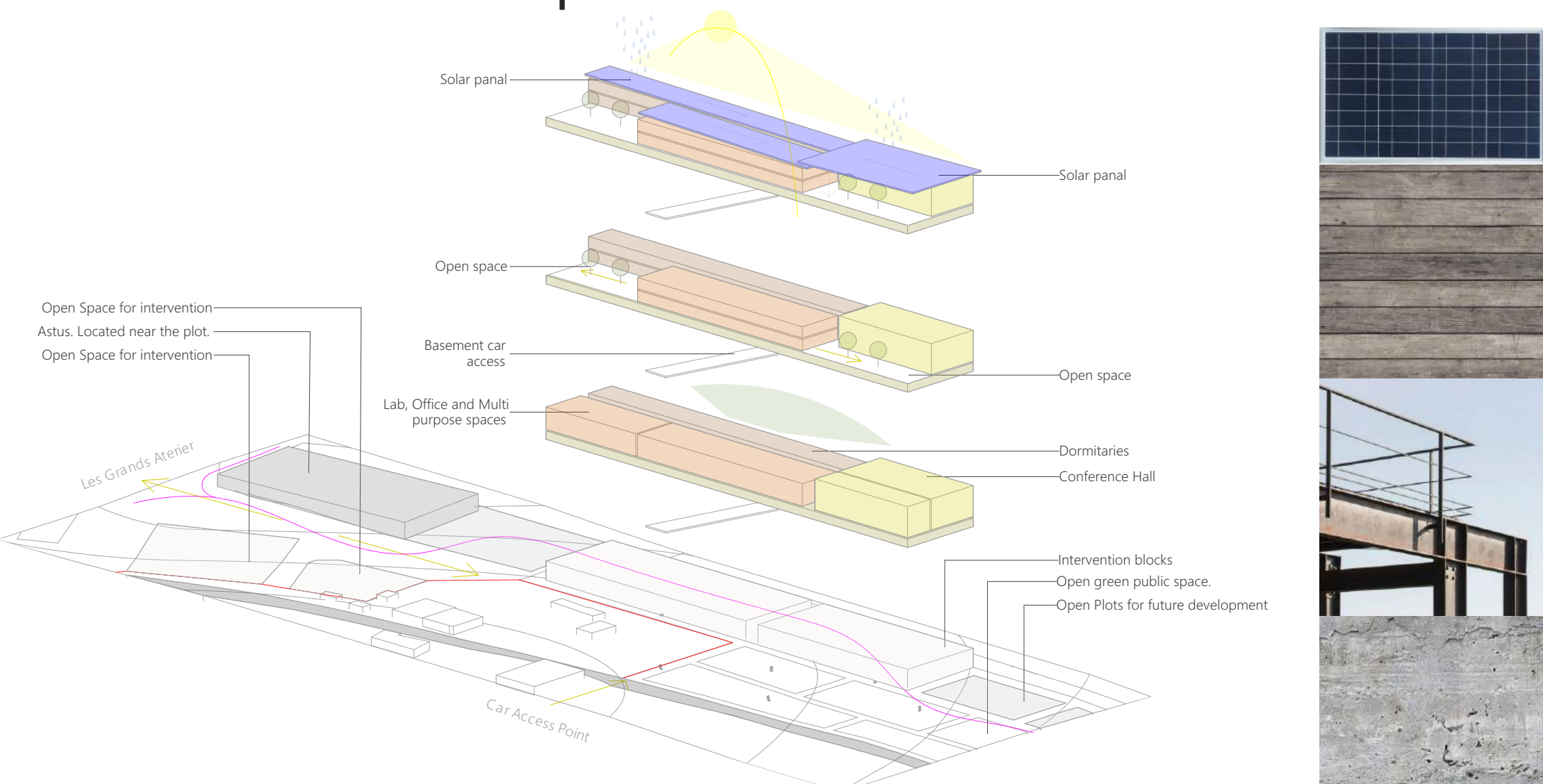
2nd - Now we have the long center part of the site open for blocks due to the path that shold connect the site to the field cutting through.



2nd - Now we have the long center part of the site open for blocks due to the path that shold connect the site to the field cutting through.



## Architectural Concept



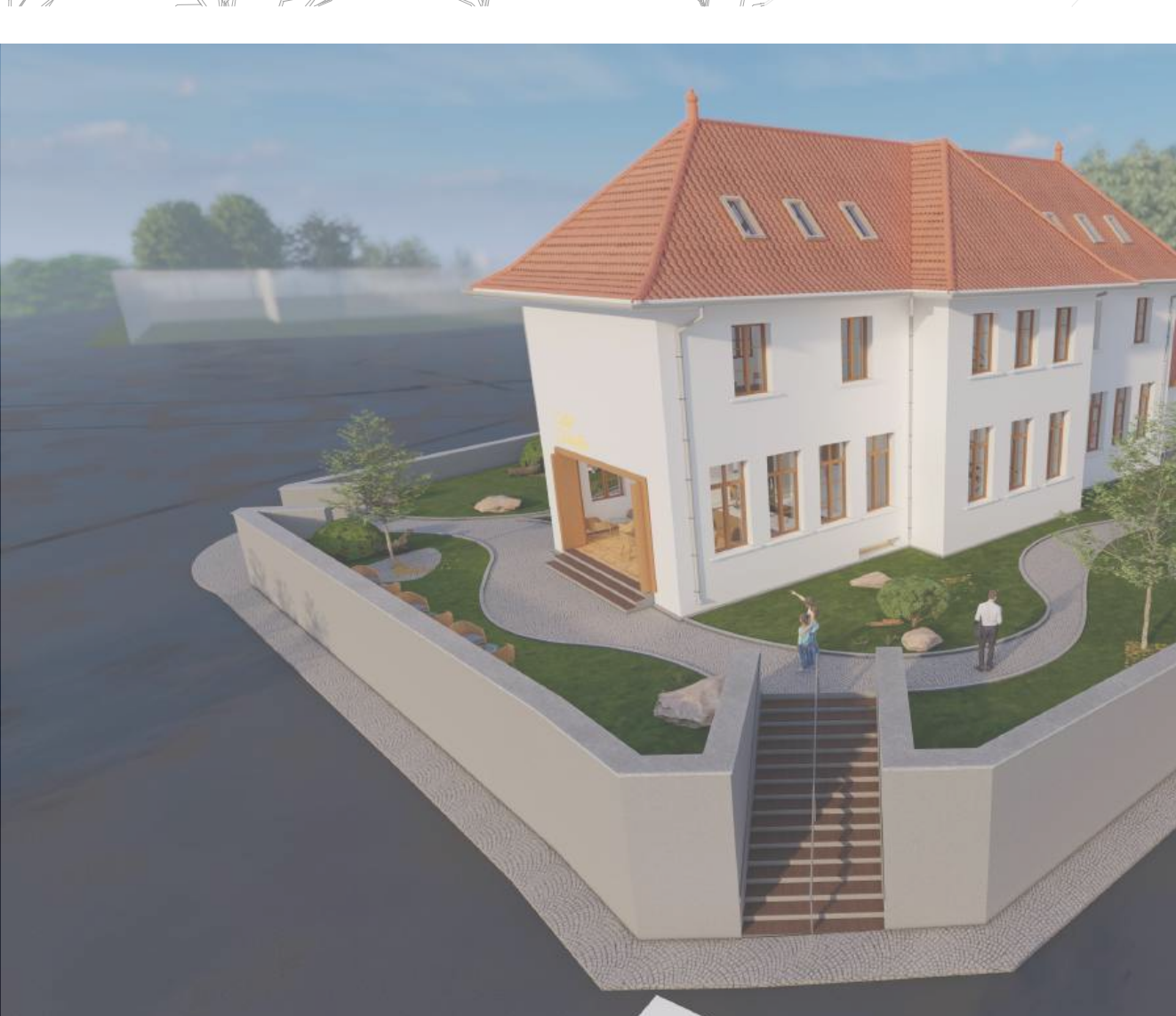
# Chimilin

## Project Brief

This project involves the renovation of a former school building, abandoned due to façade cracks, into a multi-purpose community space. The three-story, 250 m<sup>2</sup> structure will accommodate various associations and organizations throughout the year.

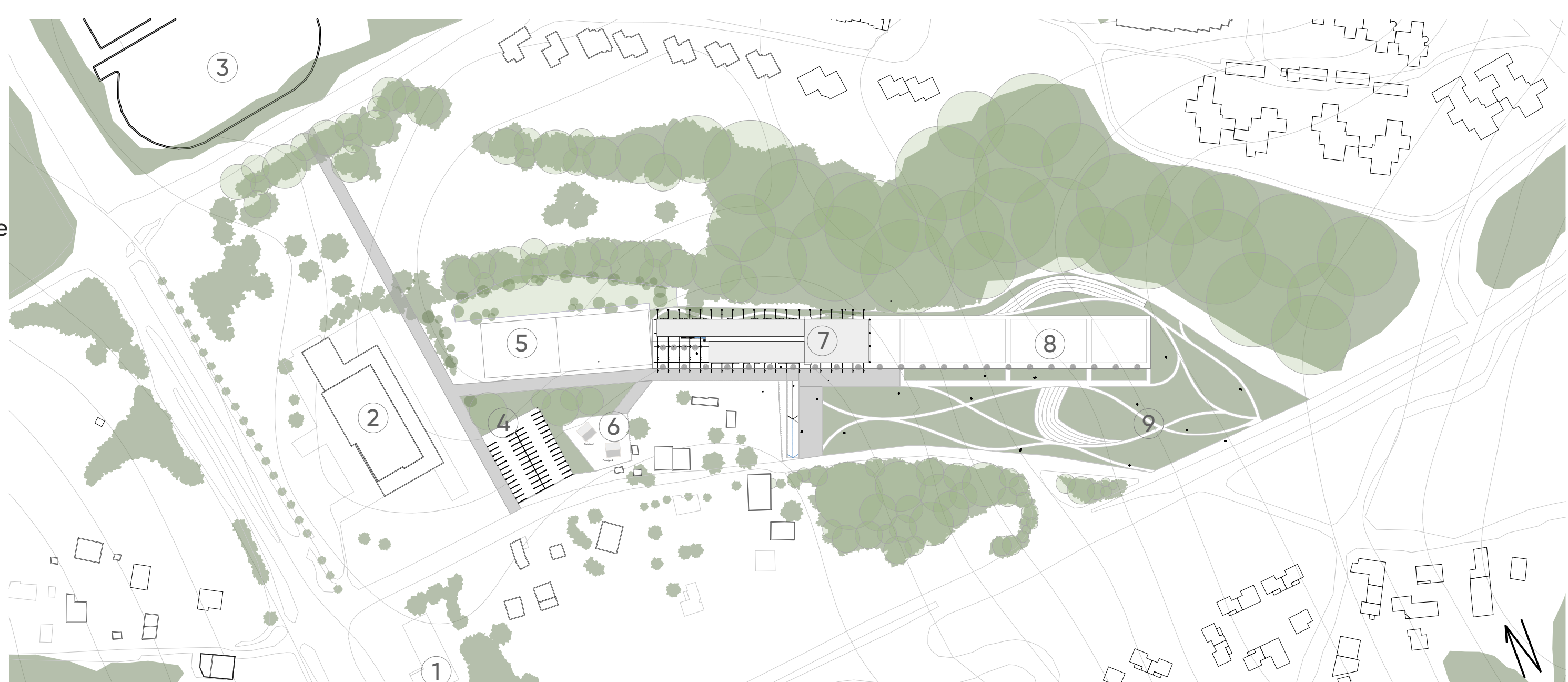
The design should ensure modularity and flexibility, allowing for diverse uses such as cultural activities, workspaces, and meetings. Essential support spaces include an administrative area, cafeteria, meeting rooms, leisure areas, and storage.

Renovation efforts should address both façade and interior layout, with a strong focus on sustainability, improving energy efficiency, material selection, and user well-being. The goal is to create a dynamic and adaptable space for the Chimilin community.



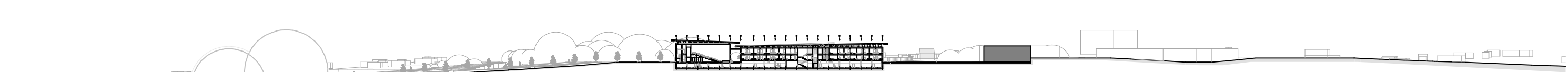
## Site Plan

Scale 1:2000



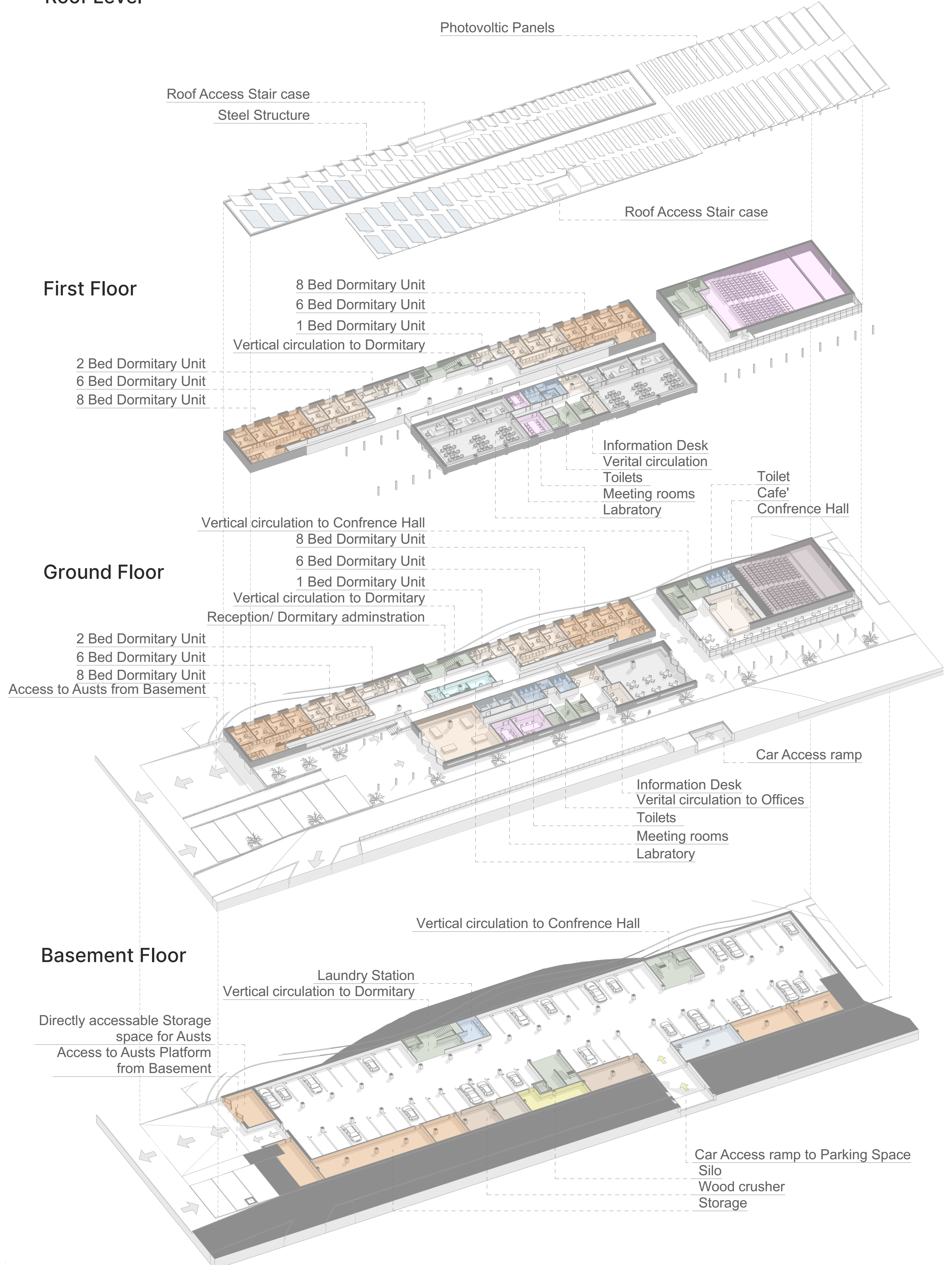
## Site Section

Scale 1:2000



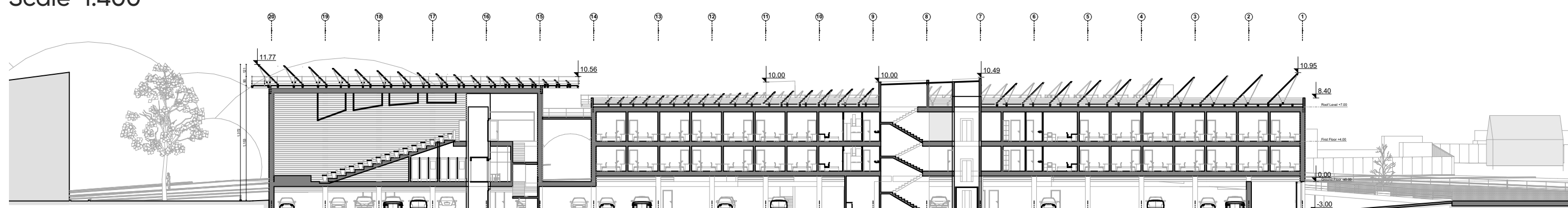
## Axonomic Plan

Roof Level



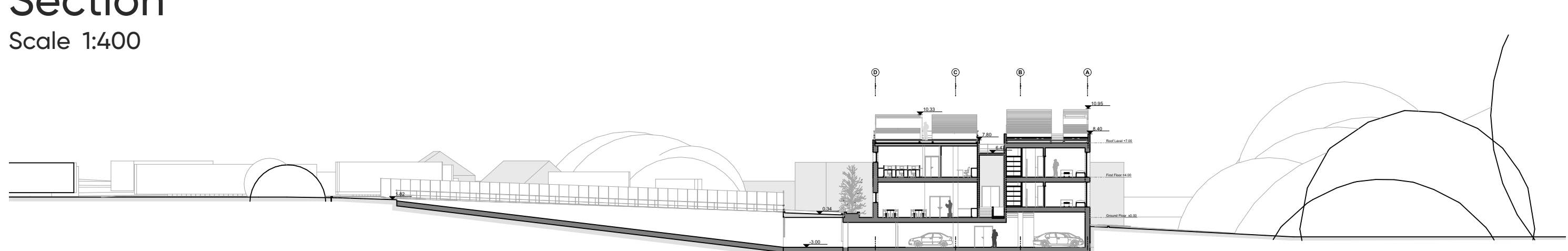
## Section

Scale 1:400

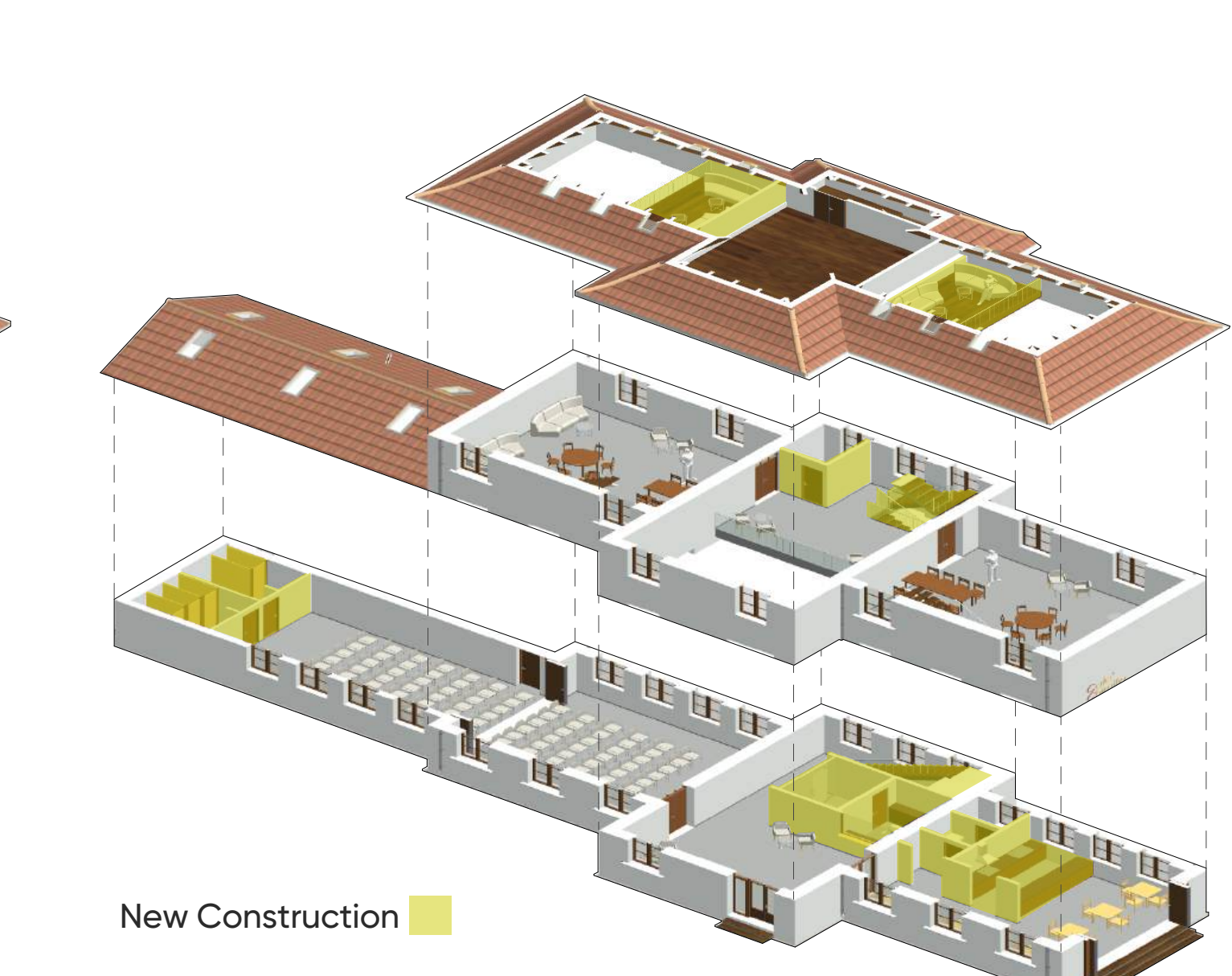
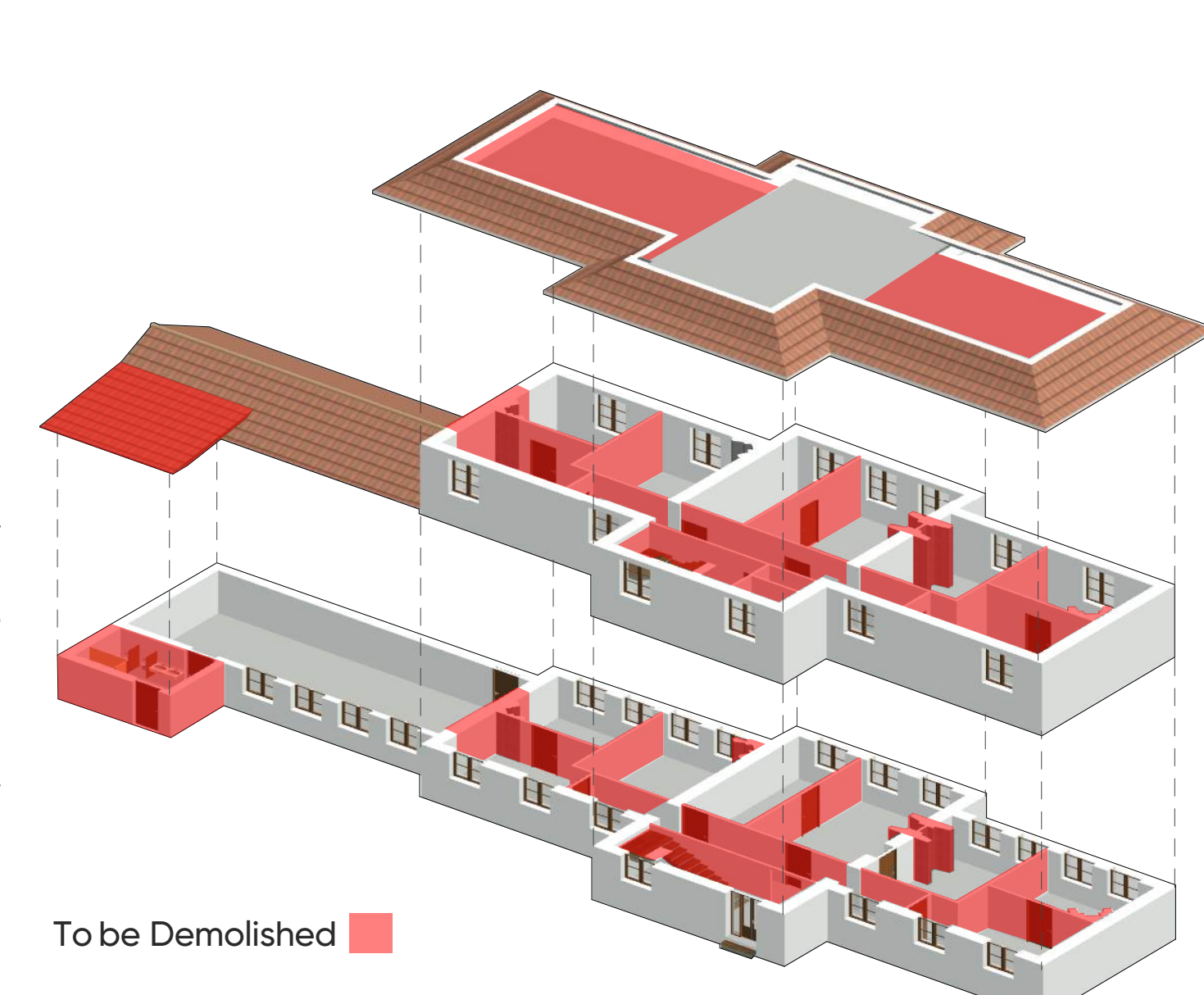
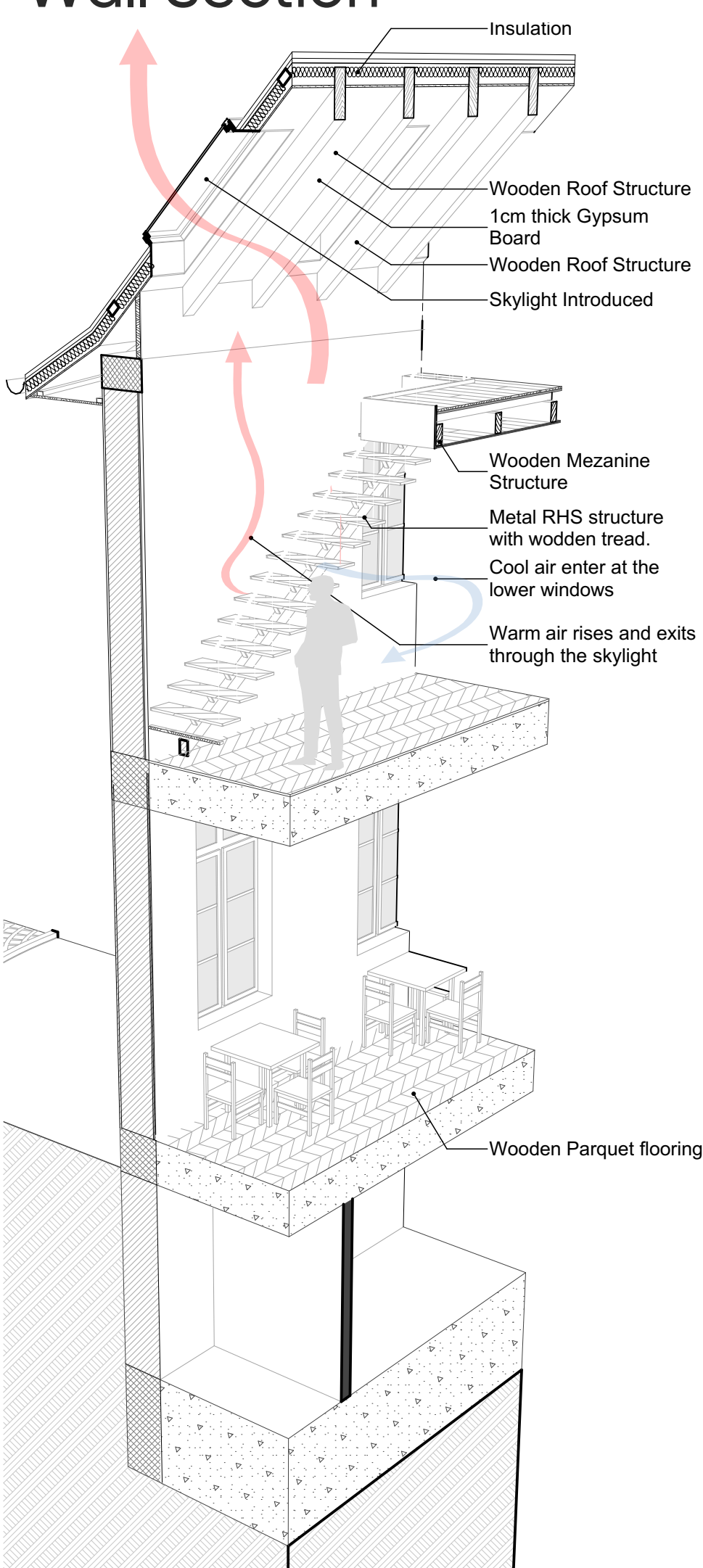


## Section

Scale 1:400

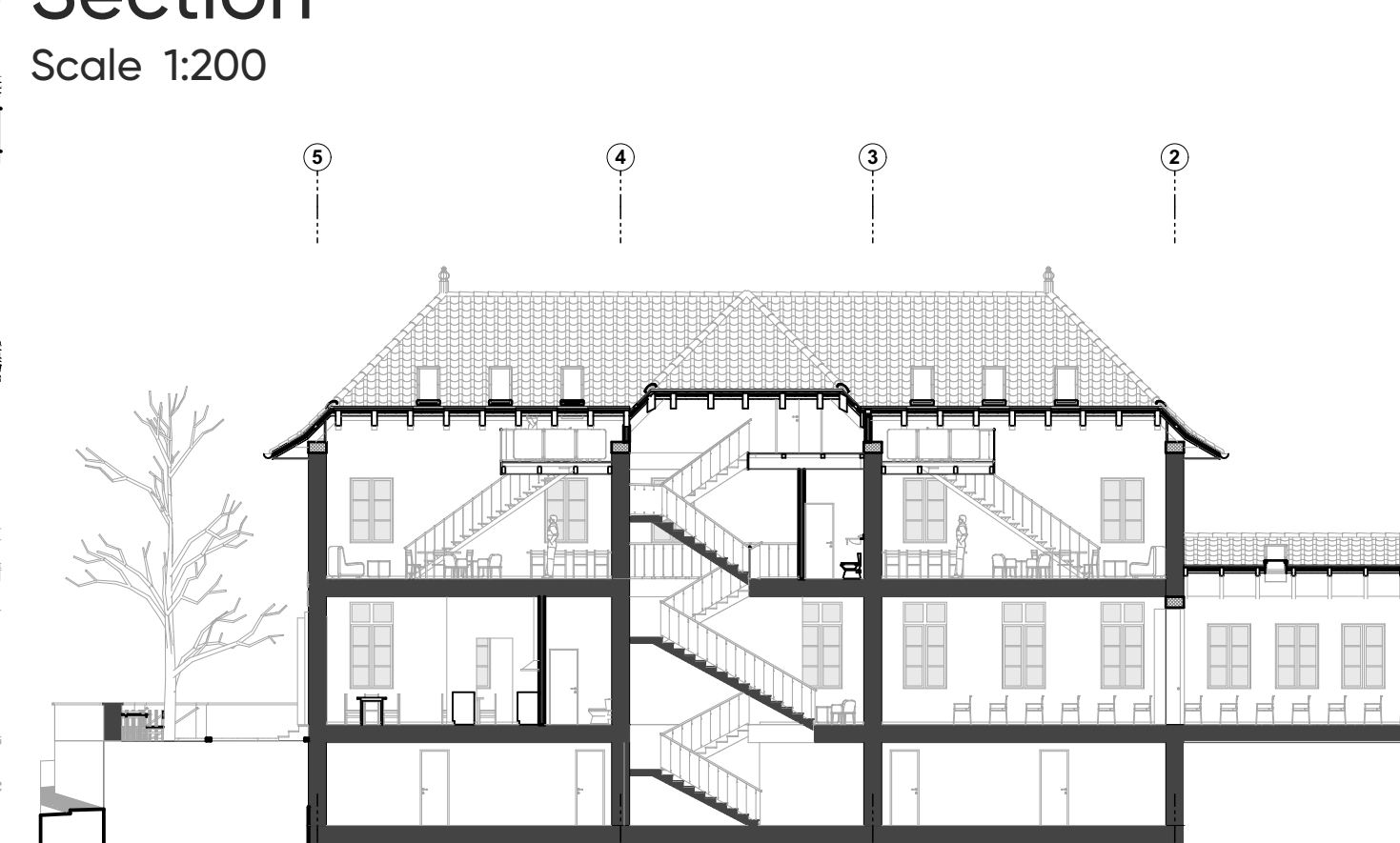


## Wall Section



## Section

Scale 1:200



## Section

Scale 1:200

